

Semi-Annual Safeguards Monitoring Report
Jan-June 2025

Solomon Islands: Urban Water Supply and Sanitation Sector Project

Semi-Annual Safeguards Monitoring Report

Jan – June 2025

**Safeguards Team
Project Management Unit
Solomon Water
Honiara
Solomon Islands**

August 2025 (Ver#2)

Prepared by Solomon Water for the Asian Development Bank and World Bank.

This Semi-Annual Safeguards Monitoring Report is a document of the borrower. The views expressed herein do not necessarily represent those of ADB's Board of Directors, Management, or staff, and may be preliminary in nature. Your attention is directed to the "terms of use" section of this website. In preparing any country program or strategy, financing any project, or by making any designation of or reference to a particular territory or geographic area in this document, the Asian Development Bank does not intend to make any judgments as to the legal or other status of any territory or area.

Loan No: 3826-SOL: Urban Water Supply and Sanitation Sector Project ADB
Grant 0662-SOL Urban Water Supply and Sanitation Sector Project ADB
Grant No. 0663-Sol: Urban Water Supply and Sanitation Sector Project European
Union
Loan World Bank: Urban Water Supply and Sanitation Sector Project
Project No: 51271-00

ABBREVIATIONS

ADB	Asian Development Bank
AP	Affected persons
CAR	Corrective action request
CCP	Communication and consultation plan (for the project)
CSS	Country Safeguards System
CESMP	Construction environmental and social management plan (prepared by the contractor)
DBO	Design Build Operate
DCA	Development Consent Agreement
DDR	Due Diligence Report
DFAT	Australian Department of Foreign Affairs & Trade
EARF	Environmental and Review Framework
ECD	Environment Conservation Department (within MECDM)
EHS	Environmental, Health, and Safety Guidelines (of the World Bank Group)
EIS	Environmental Impact Statement
EMP	Environmental management plan
ESMP	Environmental and Social Management Plan
EUB	European Union Bank
FGD	Focus group discussion
GRM	Grievance redress mechanism
HAEP	Hygiene awareness and education program
HNWS	Honiara Network Water Supply project
HWMP	Honiara Watershed Management Project (GEF financed component of UWSSSP)
IEE	Initial Environmental Examination
IES	International environment specialist (of the DSC)
LARP	Land Acquisition and Resettlement Plan
MECDM	Ministry of Environment, Climate Change, Disaster Management and Meteorology
MMERE	Ministry of Mines, Energy and Rural Electrification
MID	Ministry of Infrastructure Development
MOFT	Ministry of Finance and Treasury
NRH	National Referral Hospital
PA	Proposal application
PER	Public Environment Report
PMU	Project Management Unit (in SW)
PSC	Project Steering Committee
PPA	Project Preparation Assistance
PRF	Project Readiness Financing
ROW	Right of Way
RF	Resettlement Framework
RSA	World Bank Regional Safeguard Advisor
SBD	Solomon Islands Dollar
SEAH	Sexual exploitation, abuse, and harassment
SIG	Solomon Island Government

SMR	Semi-annual safeguards monitoring report
SP	Solomon Power
SPS	Safeguard Policy Statement 2009 (of ADB)
SW	Solomon Islands Water Authority trading as Solomon Water
ToR	Terms of Reference
USD	United States Dollar
WB	World Bank
WASH	Water, Sanitation and Hygiene
WinS	WASH in Schools
WS	Water Supply
UWSSSP	Urban Water Supply and Sanitation Sector Project
WTP	Water Treatment Plant
WBSP	World Bank Safeguard Policies

Table of Contents

EXECUTIVE SUMMARY.....	6
1. INTRODUCTION.....	8
1.1. Background.....	8
1.2. Project Description.....	8
1.3. Purpose of this Report	10
2. PROJECT PROGRESS.....	11
2.1. Project Overview	11
2.2. Safeguards Implementation Arrangements.....	11
3. ENVIRONMENTAL MONITORING.....	14
3.1. Environmental Safeguard Documentation and Instruments	14
3.2. Construction environmental and social management plans (CESMPs)	18
3.3. Environmental Monitoring and Inspections.....	18
3.4. Stop work Notices.....	19
3.5. Due Diligence for UWSSSP Phase 2	20
3.6. Workers' Health and safety	23
3.7. Training.....	23
4. SOCIAL SAFEGUARDS MONITORING.....	24
4.1. Status of Implementation of LARPs.....	24
4.2. Honiara Water Supply (HNWS).....	31
4.3. Honiara Wastewater Project (HNWW) LARP.....	32
4.4. Provincial water supplies	33
4.5. Outstanding Resettlement Activities	39
4.6. Matters of significant importance.....	39
5. COMPLIANCE WITH PROJECT SAFEGUARDS COVENANTS.....	40
6. PUBLIC CONSULTATION, DISCLOSURE, CAPACITY BUILDING...	41
6.1. Planned Consultation Activities for July-December 2025	50
6.2 Capacity Building and Training.....	50
7. GRIEVANCE REDRESS MECHANISM (GRM).....	51
7.1. Gender Action Plan (GAP) Implementation.....	56
8. SUMMARY AND CONCLUSIONS.....	57
8.1. Recommendations for Implementation and Corrective Actions	61
APPENDICES	65
Appendix 1: Consultation for the Honiara Water Mains Rehabilitation Works – UWSSSP Phase 2.....	65
Appendix 2: Environmental Audit Findings and Corrective Actions	71
Appendix 3: Selected Site Inspection Reports – UWSSSP Subprojects.....	79

List of Tables

Table 1: Engagement of International Specialists	12
Table 2: Status of IEE/PER for UWSSSP subprojects as of end of 30 June 2025	15
Table 3 Summary of NTCs from Jan-June 2025	19
Table 4 Status of IEE/PERs for UWSSSP Sub-projects delivered by SMEC as of 30 th June 2025	21
Table 5: Status of LARPs / DDRs for UWSSSP subprojects as at 30 th June 2025	25
Table 6: Status of negotiations with land title holders (for easement access or purchase)	36
Table 7: Consultations held within the reporting period	42

EXECUTIVE SUMMARY

This is the semi-annual Social and Environmental Safeguards Monitoring Report (SMR) for the period January to June 2025, compiled by the Solomon Islands Water Authority for the Solomon Islands Urban Water Supply and Sanitation Sector Project (UWSSSP).

The aim of the project is to improve access to safe water and improved sanitation across the Solomon Islands focusing on five components: (i) Output 1: secure and safe urban water supplies; (ii) Output 2: effective, efficient and safe urban sanitation services; (iii) Output 3: enhanced awareness of good hygiene and water issues and sustained improved hygiene behaviour; (iv) Output 4: ensure SW is financially and technically sustainable, and (v) Output 5: Watershed protection – management of Honiara's watershed areas strengthened to build resilience to climate change.

This report describes the social and environmental safeguard activities undertaken during the period, with a focus on planning, pre-construction approvals, and construction/implementation. Whilst project outcomes have been delayed, implementation of environmental and social safeguards for UWSSSP projects continues to comply with both the country safeguards system and ADB/WB policies and instruments as set out in the Project's environmental assessment and review framework (EARF) and resettlement framework (RF).

As previously reported, all PERs required for UWSSSP Phase 1 have been completed and approved except the PER for Gizo water supply which is delayed awaiting approval for more hydrogeological investigations at Mile 3, Mile 6 lake and other surface water sources. The Honiara Water Main Replacement Subproject held a week of Public Consultation meetings with MECMD. A Land DDR (Due Diligence Report) for the subproject has also been completed is under review with ADB and WB specialists. This finalised document will be presented to the MECMD, so that after MECMD's review and approval a development consent for works to commence can be finalized. The proposal application for Auki project has been reviewed by MECMD and a PER is required. The PER has not started pending advice from the subproject management team.

Monitoring of current UWSSSP phase 1 projects is ongoing during this reporting period by PMU. An environmental audit of all subprojects was carried out by the PMU safeguards team for this reporting period. Non-compliances were identified and communicated to contractors via site inspections report and site instructions. Generally, all sites were in compliance with Environmental conditions. As in previous reports improvements in the use of MSDS and storage of hazardous materials were observed. Safe practices were observed across most sites.

For the Honiara Wastewater Project, land acquisition and resettlement plans (LARPs) are being prepared in sections covering western (National Referral Hospital (NRH)), eastern (Ranadi), and Ranadi Rd to Goodwood Outfall (a component of the eastern Ranadi section). For the western (NRH) section, currently the main concern is regarding a section of pipe which needs to be installed under land owned by the South Seas Evangelical Church (SSEC) who initially would not agree to the installation. However, they have now agreed. The MOU was signed on 4th April 2024.

There were six (6) grievances registered during this reporting period. Four (4) of these grievances were resolved except for one (1) in this reporting period. The outstanding grievance is for the Trunk Mains Florence Young School (Kukum) Section.

Community Advisory Committees (CACs) have been established for Tasahe to Kongulai area. PMU's efforts in assisting contractors to establish a CAC for Titige, Burns Creek and other Trunk Main sites in Honiara remains a key challenge because in some commercial areas, where the majority of the properties are businesses and working people, there is no socially cohesive "community", and people do not want to join any committees or may have other commitments. The CAC group for Noro subproject was finalised in a MOU dated 29th October 2024 between SW and Ziata Tribal Groups. This proved effective to some degree in dealing with internal disputes and grievances between contractor, landowner groups and SW. In the absence of an effective community structure, the CLO for SW is working closely with Lands team, contractors and members of communities to carry out meaningful community engagements.

1. INTRODUCTION

1.1. Background

1. Solomon Islands has around 19.8% (or 102,030) of its estimated present total population of 669,823 (World Bank 2019)¹ living in urban and peri-urban areas. The country is divided into nine provinces: Central, Choiseul, Guadalcanal, Isabel, Makira-Ulawa, Malaita, Rennell and Bellona, Temotu, and Western. The country's capital, Honiara City, is situated on the north-western coast of Guadalcanal. Malaita has the largest population of 160,583 people, followed by Guadalcanal (155,605), Western (98,820), Honiara city (90,441) and Central (32,603) based on the Solomon Islands National Statistics Office projected population by province.² The population growth rate is the highest in Guadalcanal (4.4%) followed by Honiara (2.7%), Western (2%), Central (1.9%) and Malaita (1.2%).³ According to the last available Household Income and Expenditure Survey, 12.7% of the population lived under the national basic needs poverty line in 2013 (9.1% in urban areas).

2. It is known that temporary and informal settlers are often not captured in the Census and at any one time the population of Guadalcanal can be closer to 200,000. Informal residential areas are characterized by uncertain or illegal land tenure, minimal or no access to public services (such as water supply, sanitation, electricity and roads) and a high presence of informal employment in the low income population. This presents challenges in providing potable water supply and sanitation services to the urban and peri-urban areas. To address the challenges, the Solomon Islands Water Authority Act of 1992 created the Solomon Islands Water Authority, trading as Solomon Water (SW), a state-owned enterprise, and mandated to provide for the proper management and development of urban water resources and wastewater services in Solomon Islands. SW has been guided by its Five-year Action Plan and 30-Year Strategic Plan since 2017. These plans outline the strategy to meet the demand for water and wastewater services up to 2047 for Honiara, including peri-urban areas, as well as meeting the needs of the provincial capitals and other major urban centres in Solomon Islands.

1.2. Project Description

3. The Urban Water Supply and Sanitation Sector Project (UWSSSP), in line with SW's plans, with funding from the Asian Development Bank (ADB), World Bank (WB), European Development Fund and the Solomon Islands Government (SIG), is implementing the Project to help improve access to safe water and improved sanitation. The UWSSSP outputs include: (i) Output 1: secure and safe urban water supplies; (ii) Output 2: effective, efficient and safe urban sanitation services; (iii) Output 3: enhanced awareness of hygiene and water issues and sustained improved hygiene behaviour; (iv) Output 4: ensure SW is financially and technically sustainable, and (v) Output 5: management of Honiara's watershed area strengthened to build resilience to climate change.

¹ World Bank, <https://data.worldbank.org/indicator/SP.POP.TOTL?locations=SB>

² <https://www.statistics.gov.sb/statistics/social-statistics/population>

³ National Statistics Office, 2009 census

4. The UWSSSP has adopted a sector approach for developing sustainable, inclusive and climate resilient water supplies and improved sanitation, and for enhancing hygiene awareness, water conservation, and faecal sludge management. However, during early implementation it became apparent that some problems with the water supply system are caused by lack of catchment protection, and in the context of the climate crisis, without watershed protection, the existing and future sources of water will not be reliable and will remain highly vulnerable to climate change. To be sustainable, output 5, the Honiara Watershed Management Project (HWMP) will focus on improving the management of watershed areas that are vital to a climate resilient water supply. The participatory-driven initiatives will include erosion and sedimentation control to reduce risks from flooding and landslides, and improvement of the ecosystem services provided by Honiara's catchment areas, including enhancement of water quality and regulation of water flow.

5. **Output 1** is intended to secure reliable and safe freshwater supplies by (i) increasing the number of urban households in Honiara with access to climate and disaster resilient water supplies; (ii) reducing non-revenue water from its 2017 level of 62% to 30% or less by 2027; and (iii) increasing SW water production capacity in Honiara by up to 5 million litres per day (ML/d) and improving SW water treatment capacity through the rehabilitation, replacement, or expansion of current sources and water treatment facilities, to meet water demand and ensure full compliance with drinking guidelines across the city by 2027. Investments will include: (a) in Honiara, (i) rehabilitation of existing water supply sources, and expansion of production and treatment systems, (ii) installation of water supply mains to expand and rehabilitate the water supply system, (iv) additional water storage capacity, (v) leak detection and pipeline repairs, (vi) installing bulk supply metering and expansion of SW's customer meter replacement program to install pre-payment meters, and (vii) expanding SW's water supply networks to an additional 5,700 connections in unserved areas, including in informal settlements; (b) in Auki, Gizo, Noro and Tulagi, rehabilitation and expansion of the existing water supply systems; and (c) in Munda, development of a new water supply system.

6. **Output 2** is intended for effective and efficient sewerage services by: (i) preparing septage management regulations, (ii) constructing a septage treatment facility under a five-year design-build-operate (DBO) contract to service the greater Honiara area, (iii) replacing existing wastewater outfalls in a state of disrepair with new ones, (iv) installing sewer mains to expand and rehabilitate the Honiara trunk sewer system, and (v) construction of new sewage pumping stations and rehabilitation of existing ones.

7. **Output 3** is intended to develop enhanced awareness of hygiene and water issues and sustained improved hygiene behaviour. This includes a hygiene awareness and promotion program to complement other ongoing hygiene awareness and promotion activities in urban areas.

8. **Output 4** involves implementing a program to assist SW strengthen its financial, technical, and operational sustainability. This includes developing policies, asset planning, and data management, financial and technical systems monitoring, and reporting.

9. **Output 5**, the HWMP, involves: (i) strengthening capacity for planning (watershed data, mapping, hydrological modelling, and information sharing) ;(ii)

empowering communities to implement solutions for effective management protection, and restoration of the forest and riparian habitats – through partnerships; and (iii) facilitating interagency and inter-sectoral coordination and governance to develop long-term integrated catchment plans.

1.3. Purpose of this Report

10. The SMR is a requirement under the ADB Safeguard Policy Statement 2009 (SPS), WB policies and instruments (formerly Operational Policies and Bank Policies OP/BP 4.01, 4.04, 4.0, and 4.12 but since 2018, replaced by WB Environmental and Social Framework), and the project/loan agreements. The safeguards categories for this project are B for environment, B for involuntary resettlement and C for indigenous people

11. This SMR covering the period from January to June 2025 and presents the undertakings during the reporting period, of both the social and environmental safeguards supporting the UWSSSP outputs as outlined above.

2. PROJECT PROGRESS

2.1. Project Overview

12. Implementation of environmental and social safeguards for UWSSSP projects continues to comply with both the country safeguards system and ADB/WB policies and instruments as set out in the Project's environmental assessment and review framework (EARF) and resettlement framework (RF). The social safeguards team has continued to provide oversight on the implementation of four CESMPs of subprojects that are being constructed simultaneously in Honiara, as well as undertaking negotiations with landowners to complete the LARPs for subprojects that are still undergoing final detailed designs.

13. As always, uncertainties over land ownership (and occasionally, delays on the final selection of engineering design alternatives, which are essential to ascertain the affected persons) initially meant that safeguards staff often could not initiate community consultations over land tenure until designs were finalised. Most designs were finalised, but delays still continued in sites where, landowners (LOs) were reluctant to agree to some plans affecting their lands. Delays in producing Land Acquisition and Resettlement Plans (LARPs) were particularly pronounced in Honiara, where many people are reluctant to sell or lease land at current valuations, but have also affected the provincial water supply subprojects. At Noro, discussion with land claimants progressed positively with commencement of works agreed. The land-owning groups in Noro, are all generally in support of the project. The contractor (CCB Envico Pty Ltd of West Melbourne) mobilised in February 2025, and construction work is ongoing in this reporting period.

14. Munda and Gizo subprojects are also awaiting SMEC's finalised designs before LARPs can be drafted.

15. Following the termination of REAN-PCS because of repeated delays and non-performance, the contractor sought and gained an injunction and the Court ordered a 'stay' on the termination, which has still not been resolved. Works continue to be discussed for the Kongulai WTP whilst construction of the Honiara Water Supply Service Reservoirs (Panatina, Tasahe, and Titige reservoirs) and Honiara Water Supply-Trunk Mains is ongoing, with PMU safeguards staff monitoring implementation. The oversight work on the CESMPs is performed through conducting visits to construction sites (together with Environmental Safeguards staff), reviewing contractor's monthly monitoring reports, supporting contractors in their consultation requirements and assisting in resolution of grievances.

2.2. Safeguards Implementation Arrangements

16. SW has a Project Management Unit (PMU) delivering the Project. Last year SW received confirmation from World Bank that the oversight of World Bank safeguard policies for UWSSSP had been transferred to the task team safeguards specialists. SW no longer has to seek Regional Safeguard Advisor approval for safeguards instruments. This change made as a result PMU safeguard team's strong commitment to manage safeguard risk and to pro-actively organise training for contractors to improve the quality of their documentation.

17. At the beginning of the Project, the PMU recruited specialists to provide intermittent inputs to ensure compliance with development partner safeguards requirements including provision of support to the PMU and conduct of due diligence. The National Social Safeguard Consultant position has finally been filled in June after the incumbent left in 2023. **Table 1** provides an overview on the engagement of the international specialists and the proportion of their time used to 30th June 2025. It should be noted that the WASH team remain without a manager, in the role of International Water, Sanitation and Hygiene specialist, which staff say is urgently needed, with the start of the new WASH in Schools programme (WinS).

Table 1: Engagement of International Specialists

Role	Contract Started	% of Time Used to 30 th June 2025
International Environmental Specialist	Q4 2019	~80%
International Water, Sanitation and Hygiene (WASH)	Q4 2019	~100
International Communication Specialist	Q4 2019	~100%
International Social Safeguards and Gender Specialist	Q2 2020	~95%
International Monitoring and Evaluation Specialist	Q2 2020	~85%

18. The project's RF, approved in 2018, lays out the approach to complying with objectives of involuntary resettlement safeguards. Land acquisition is to be avoided where possible and involuntary settlement impacts minimised or at least restored for the livelihoods of affected persons (APs). The RF in this context provides guidance on the assessment and mitigation of resettlement impacts, the preparation of land acquisition and resettlement plans (LARP) and/or due diligence reports (DDR), and the implementation and monitoring of compensation and income restoration measures for APs.

19. Based on the project RF, an initial LARP was finalised on 8th March 2019 for the six subprojects based in Honiara including:

- Water reservoirs at (a) Tasahe, (b) Titinge Ridge, and (c) Panatina
- Rehabilitation and building the new water treatment plant at Kongulai
- Augmenting the trunk mains from (a) Kongulai to White River and Rove Trunk Main; (b) East Kola to Naha Trunk Main, and (c) Panatina SR to Burns Creek Trunk Main – to expand the existing network
- Upgrades of sewer outfalls
- Construction of additional sewage pump stations and refurbishment of King George VI and Point Cruz wastewater pump stations
- Construction of a septage treatment facility to service the Greater Honiara area.

20. It was estimated that a total of 20,648m² of land would be impacted by the project. Of this land, 15,706m² would require negotiation of agreements with private landowners. SW's priority in all land negotiations is to pursue outright purchase of land, and only resort to lease arrangements when outright purchase negotiations are unsuccessful. The Kongulai WTP subproject required purchase of land for resettlement of 41 APs (eight families), as did Titinge Ridge reservoir site which has six APs (one family). The overall LARP has now been superseded by a number of LARPs prepared for each subproject.

21. A summary of the status of the various LARP and DDR can be found in **Table 5** under the Social Safeguards Monitoring Section 4.

22. The Honiara Watershed Management Project (HWMP) began in 2023. It is developing effective partnerships and building institutional, financial and technical capacity to protect water catchments. An EARF and LARF, based on the documents prepared for the main project, have been separately prepared for the HWMP.

23. There has been ongoing review and updating of the Initial Environmental Examination (IEE)/Public Environmental Reports (PERs), and Construction Environmental, and Social Management Plans (CESMPs) required for the UWSSSP projects within this reporting period. Details are provided in the next section.

3. ENVIRONMENTAL MONITORING

3.1. Environmental Safeguard Documentation and Instruments

24. Progress has been made on the various IEE/PER and Development Consents (DCs) during this reporting period. All PERs required for UWSSSP Phase 1 have been completed and approved except the PER for Gizo water supply which is pending ongoing hydrogeological investigations. The expected timeline for Gizo PER submission is by the end of Q2 2026.

25. The Gizo water supply project IEE/PER revision and finalization is further delayed awaiting approval for more hydrogeological investigations at Mile 6 lake and surface water sources.

26. The Honiara Water Main Replacement (UWSSSP Phase 2 PER) is with ECD pending decision on the development consent after a series of Public Consultations meetings from 26th to 30th May 2025. The development consent is expected to be awarded in Q3, 2025.

27. The Honiara Water Pipeline Expansion PER, has been reviewed. Comments from donors have been included in the final draft in this reporting period.

28. Auki Water Network Expansion subproject proposal application (PA) was submitted to MECDM on 13th June 2024. MECDM reviewed the PA and determined that a PER is required to be prepared for the Auki subproject. No work has been started on the PER until advise is given from the subproject management.

29. The preparation, review and approval status of IEE/PERs is summarised in **Table 2** below.

Table 2: Status of IEE/PER for UWSSSP subprojects as of end of 30 June 2025

Sub-Project		ENV Category	IEE/PER Prepared	Development consent application	CESMP Approved by SW	Status of subproject implementation
No	Name					
1	Kongulai WTP	B	Yes	Yes (12/03/20) Development consent received 01/05/20.	Yes (cleared on 11/7/23)	Site clearance completed. Earthworks halted due to contract termination by SW.
2	Honiara Water Supply Service Reservoir (Panatina, Tasahe, and Titige reservoirs)	B	Yes	Yes (21/01/21). Development consent received on 17/03/21.	Yes (cleared on 24/04/23)	Construction of new reservoirs are underway and overall 80% has been completed. Construction of walling and roofs have been completed. Tasahe - All major concreting works completed. Pending activities including plumbing and construction of gallery building near completion. Waterproofing, pipe plumbing, testing & commissioning yet to be carried out. Titige - All major concreting works completed. Pending activities including waterproofing, plumbing, testing and commissioning, major storm water, electrical, fencing works to be carried out. Panatina - All major concreting works completed. Works currently underway including pipe gallery building and

						chlorination building which is nearing completion. Pending activities - waterproofing, pipe plumbing, testing and commissioning. Contractor's intended completion date: February 2024 Expected completion date: April 2026
3	Honiara Water Supply-Trunk Mains	B	Yes	Yes (21/01/21). Development consent received on 17/03/21.	Yes (cleared on 25/5/23)	Construction works are still underway including completion of pressure testing at Panatina to Burns creek section, East Kola to Kukum, White River to Town ground and Kongulai to White River.
4	Auki Water Supply Improvement	B	Yes	Yes (10/08/18). Development consent received on 24/09/18.	Yes (25/06/2019)	Subproject completed and now in operational phase. Works involves trenching, pipe laying and installation of fire hydrants.
5	Tulagi Water Supply Project	B	Yes	Yes (25/01/21). Development consent received on 7/03/21.	Not yet due (no construction)	Preconstruction phase. Project on hold.
6	Gizo Water Supply	B	Draft completed (awaiting additional hydrogeological investigations).	No	Not yet due (no construction)	Awaiting additional hydrogeological studies.
7	Noro Water Supply Improvement	B	Yes	Yes (6/12/22) Development consent received on 29/03/23.	Yes (cleared on 29/03/23)	Contract awarded to CCB Envico. Contractor who has commenced work in Q 1, 2025.

8	Munda Water Supply	B	Yes	Yes (6/12/22) Development consent received on 10/04/23.	Not yet due (no construction)	Preconstruction phase with further drilling planned.
9	Honiara Network Wastewater-Outfalls	B	Yes	Yes (03/02/23) Development consent application received on 3/05/23.	Not yet due (no construction)	Preconstruction phase
10	Honiara Network Wastewater- (Pump station and collector mains)	B	Yes	Yes (03/02/23) Development consent application received on 3/05/23.	Not yet due (no construction)	Preconstruction phase
11	Honiara Wastewater: Goodwood Section		Subproject exempted by MECDM. No IEE/PER required.	Subproject exempted by MECDM. Exemption received on 7/06/22.	Yes	Construction works underway. All pipes have been laid in this reporting period. Manhole installation works will be completed in Q1 2026 with pressure testing.

3.2. Construction environmental and social management plans (CESMPs)

30. All CESMPs for current Phase 1 projects have been approved by SW.
31. Review and updating of the Noro CESMP based on ADB's comments was completed in this reporting period. SW have approved the final draft of the CESMP in Q4 2024. The final draft of the CESMP was cleared by WB/ADB in Q1 2025 and the contractor has mobilised to site.

3.3. Environmental Monitoring and Inspections

32. There were routine weekly site visits to Panatina, Titige and Tasahe reservoir sites, White River trunk main site, Kukum, and the Ranadi-Goodwood sewer and outfall construction site during this reporting period. Works undertaken by the contractors were mainly associated with trenching and excavations works, and pipe laying. In situ reinforced concrete (RC) works, form works and concrete pouring for tank walls and roofs continued at Panatina, Tasahe and Titige reservoirs in this reporting period. Smaller works e.g. fire hydrants, chambers and pressure regulator valves are being installed. Initial pressure testing of the eastern section of the Truck Mains pipeline has commenced.
33. Two environmental inspections were carried out by SWs National Environmental Officer and the international environmental specialist in Q1 and 2, 2025 for the reservoir, trunk mains and wastewater subprojects in Honiara. The key issues observed were immediately address was effective traffic management and the appropriate use of PPEs. The contractor (PEP) were again reminded to also comply with all requirements of the CESMP. They were also reminded on proper dewatering of ground water into existing drains. Though the contractor comply immediately, however, they have issues maintaining the standards.
34. Implementation of CESMP at the reservoir sites have shown significant improvement in this reporting period. However, there were several issues observed and recorded at the trunk main construction sites. Improved implementation of CESMP, TMP and SMP is required of PEP. Deficiencies included:

- No traffic signage's installed when undertaking works along roadsides;
- Absence of safety barricades and signage;
- Poor waste management practices;
- Lack of reporting and documentation of incidents and grievances;
- The need to improve erosion and sediment control; and,
- Non-compliance with PPE requirements.

3.4. Stop work Notices

35. A total of six (6) stop work notices were issued for this reporting period is provided in the table 3 below

Table 3 Summary of NTCs from Jan-June 2025

Subproject	NTC Ref.	Date	Issue/ Non-compliance	Corrective Measures	Status
Honiara Reservoirs Storage	NTC 153	01/04/2025	Breach of confined space methodology	Contractor hired Red Cross Honiara to provide Confined Space training and mock drill for all Employee's including sub-contractors on 25/03/2025	Closed
Honiara Water Trunk Mains	NTC 210	10/02/2025	Improper barricades and open trenches at East Kola to Kukum Section	Contractor rectified open trench and barricade issues, stop works lifted.	Closed
	NTC 206	28/01/2025	TMP issues, improper signage, damaged water-filled barriers, lack of PPEs, damaged Solomon Water customer connection, swampy road conditions (White River School)	Signages installed, concrete filled drum barriers were used as barricades, PPEs provided, SW customer connection fixed and road reinstated by PEP	Closed
	NTC 228	29/04/2025	TMP breach, inadequate PPEs and no site supervisor at White River School to Old Weir)	Site supervisor assigned and PPEs provided for workers by PEP	Closed
Ranadi Road to Goodwood	NTC 160A	10/03/2025	non-submission of E&S. Monthly and Daily Site Reports for February	February E&S Monthly Report submitted by PEP	Closed
	NTC 064B	17/04/2025	Safety Management Plan compliance)	PEP rectified safety issues in the SMP.	Closed

36. The stop work NTCs were related to non-compliance with CESMP, SMP and TMP requirements on construction works. The SW PMU team have assisted the contractor to rectify all non-compliances on site.

3.5. Due Diligence for UWSSSP Phase 2

37. SMEC was appointed to undertake the detailed engineering design for UWSSSP Phase 2 subprojects. The following subprojects are financed under the UWSSSP (Phase 2):

- Auki Water Network Expansion
- Honiara Water Mains Rehabilitation and Expansion (HWMRE),
- Honiara Water Network Expansion
- Honiara Sewerage Network Rehabilitation

38. The PER for the HWMRE has been given clearance by WB in January and then was submitted to ECD in 5 March as part of the application for Development Consent (DC). ECD lead a public hearing/consultation about the report for communities along the proposed project sites from 26-30 May including three schools. After collating the consultation minutes, the ECD director is expected to make a decision to issue a DC to SW. This DC is expected to come in Q3.

39. The following Phase 2 projects require development consents from MECDM (see Table 3).

Table 4 Status of IEE/PERs for UWSSSP Sub-projects delivered by SMEC as of 30th June 2025

Sub-Project		ENV Category	IEE/PER Prepared	Development consent application	CESMP cleared	Status of subproject implementation
No	Name					
1	Auki Water Network Expansion	B	No	No	No	An IEE/PER is required by MEDCM for these planned works.
2	Honiara Water Mains Rehabilitation	B	Yes	No	No	Final draft of PER submitted to ADB/WB on 11 th June 2024 for review and approval. This document is was updated to address donors' comments. Draft (V2) of the PER was submitted to ADB on 23 rd September 2024. External specialists reviewed and updated the PER which was submitted to WB and cleared on 29 January 25. The report was submitted to ECD on 5 March with an application for development consent. The ECD leads a public hearing from 26 May to 30 May. Development consent yet to be issued by ECD. Expecting it at Q3, 2025

3	Honiara Water Network Expansion	B	Yes, draft completed and undergoing review	No	No	Approval phase
4	Honiara Wastewater Pipeline Rehabilitation	B	No	No	No	Approval phase

3.6. Workers' Health and safety

40. There were several health and safety issues recorded in this reporting period. The key H&S issues observed were:

- Minority of workers lack of proper PPEs (hard hat, safety shoes, glasses etc.)
- Poor implementation of TMP, SMP & WMP at PEP construction sites.
- Open trenches/pits.
- Lack of portable toilet facilities for certain site and poor sanitation
- Inadequate barriers and signage used (broken water filled barriers, wooden barriers or no barriers observed at certain project locations)
- Working in confined spaces with no emergency response plans/ trainings, dust control and air quality monitoring checks.
- JSA were not reviewed and updated
- Poor scaffolding standard and safety at all reservoir project site.
- No evidence of safety checking system for scaffolding at Reservoir Site.

41. The issues were communicated to PEP via site instructions and site inspection reports. The importance of complying with PPE and TMP requirements in the approved CESMPs were highlighted to the contractor when doing the routine weekly site visits including ADB/WB Review Mission in May 2025.

3.7. Training

42. A half day introductory workshop on the proposed SW Environmental and Social Management System (ESMS) was conducted for SW team and senior executives on 6/03/2025 at the Mataniko Conference Room. The workshop was organised by [REDACTED] (ADB Environmental Specialist), [REDACTED] (SW National Environmental Officer) and [REDACTED] (SW Environmental and Social Management Officer).

43. The ESMS will be aligned to in-country legislations plus Good International Practice and aims to systematically integrate tools and procedures for effective safeguards management of all future SW projects. Key areas covered in the ESMS will include:

- Stakeholder engagement
- Grievance
- Land access and management
- Environmental, Social & Gender
- Health & safety
- Special contractual terms and conditions
- Monitoring & reporting
- Annexes

44. Once the ESMS is developed, it will be shared to SW team for review and comments. The reviewed version will be submitted to SW Board for endorsement and then appropriate trainings can be carried out for relevant SW Staff.

4. SOCIAL SAFEGUARDS MONITORING

45. The social safeguards team has continued to provide oversight on the implementation of four CESMPs of subprojects that are being constructed simultaneously, three in Honiara and one in Noro. As noted in the Implementation section of this report, the oversight work on the CESMPs is performed through conducting visits to construction sites, reviewing contractor's monthly monitoring reports, supporting contractors in their consultation requirements, assisting in resolution of grievances and ad hoc meetings. In the next half of the year, the team plans to hold regular meetings or training with the contractors' safeguards and health and safety officers purposely to enhance support for them and improve their technical capacity to implement their respective CESMPs.

46. Negotiations with landowners are still ongoing to complete the LARPs for subprojects that are still in their final detailed design phase. Part of the task includes monitoring of LARPs that have been fully implemented, provide support in resolving any project related grievances and carry out consultation requirements. Under phase 1 of UWSSSP, only the Auki Water Supply Improvement project was completed and has been in operation since 2021.

4.1. Status of Implementation of LARPs

47. The summary of the status of the different subproject LARPs for both Phase 1 and Phase 2 is shown below in **Table 5** with little movement in **what** was reported in the last SMR. Under Phase 1 of UWSSSP, 13 LARPs are required. Six LARPs have been completed and received a No Objection (NO) from ADB/WB, while five of them are still being worked on pending information from the design team and negotiations with land title holders for the establishment of easements purposely for the installation of pipelines. For the second phase of the project, due diligence reports were required for the water mains rehabilitation projects with the same expected for the wastewater network rehabilitation project since construction works will be within existing easements or areas where Solomon Water has overriding interests. The water supply expansion projects, on the other hand, are likely to trigger the involuntary resettlement policy of ADB/WB, as land may need to be acquired if trunk mains are installed on private land, and/or if works would cause economic displacement, though SW will ensure as a priority, that it does all it can to avoid causing damage to crops and physical structures. The detailed designs for the Honiara water mains rehabilitation and expansion showing the pipeline alignment have now been completed and a Land DDR has been drafted and submitted to ADB and WB for their first review on 18 June 2025.

Table 5: Status of LARPs / DDRs for UWSSSP subprojects as at 30th June 2025

	UWSSSP Subprojects	Safeguard Documents – IR Category	LARP / DDR Prepared	Status of subproject implementation Remarks
Phase 1 Subprojects designed by Suez				
Honiara Water Supply				
1	Kongulai Water Treatment Plant	LARP B	Yes. Completed, approved (9 th April 2021) and implemented.	No outstanding resettlement to be resolved. A total of eight (8) affected households/families (41 people) have been compensated and relocated from the WTP Site. The contract awarded to REAN-PCS Joint Venture started on 5 th May 2022 and was supposed to be completed by 29 th June 2023. SW gave notice of termination because of repeated breaches of contract, poor quality of work, and minimal progress made. All construction works are suspended as the issue is before the courts.
2	Honiara Water Supply - Service Reservoirs (Panatina, Tasahe, and Titinge)	LARP B	Yes. Final LARP approved by WB/ADB 31/12/21. Implementation of it is completed.	<p>All the APs have been compensated Records of inventories, payments and agreements are captured in the LARP and have been cleared by ADB/WB. Construction of new reservoirs are underway and overall 80% has been completed. Construction of walling and roofs have been completed.</p> <p>Tasahe - All major concreting works completed. Pending activities including plumbing and construction of gallery building near completion. Waterproofing, pipe plumbing, testing & commissioning yet to be carried out.</p> <p>Titinge - All major concreting works completed. Pending activities including waterproofing, plumbing, testing and commissioning, major stormwater, electrical, fencing works to be carried out.</p> <p>Panatina - All major concreting works completed. Works currently underway including pipe gallery building and chlorination building which is nearing completion. Pending activities - waterproofing, pipe plumbing, testing and commissioning</p>

	UWSSSP Subprojects	Safeguard Documents – IR Category	LARP / DDR Prepared	Status of subproject implementation Remarks
				Contractor's intended completion date: February 2024 Expected completion date: April 2026
3	Honiara Water Supply - Trunk Mains	LARP B	Yes. LARP approved by WB/ADB 31/12/21	<p>All agreements were signed and compensation of APs paid and completed. Construction works are currently underway. The section from Namoruka to Whiteriver is delayed due to the complexity of terrain including numerous stream crossings. SW requires the contractor to review their construction methodology to ensure that sedimentation and erosion issues are mitigated before works can proceed. This has not yet been submitted during this reporting period. For the other sections, works are near completion including White River to Town Ground section, East Kola to Kukum, and KGV1 to Burns Creek section. There are still areas along the new pipelines where valves are installed that are not closed off and site rehabilitated not completed as some works are still ongoing at these locations. The contractor continues to place barriers around the holes for public safety and conducts monitoring and occasional consultation.</p>
Provincial Water Supply Schemes				
4	Auki	LARP B	Yes. Completed, approved by ADB/WB and fully implemented.	<p>All affected parties resettled and compensated. Project now in operational phase. A Compensation Completion Report will be prepared in Q4 for LARPs that have been fully implemented containing receipt of payments made by SW.</p>
5	Tulagi	LARP B	Yes. LARP approved by ADB/WB on 1 Oct 2021.	<p>Agreements with APs were signed, and most payments were done around mid-April 2022, and the final two early in 2023 - based on the inventory of losses of crops and structures. Works have not yet started.</p>

	UWSSSP Subprojects	Safeguard Documents – IR Category	LARP / DDR Prepared	Status of subproject implementation Remarks
6	Noro	LARP B	Yes. LARP was sent to donors for a second review, and approved by ADB/WB on 7 th March 2025.	On 4 th December 2023 the Acquisition Officer of COL made his determination of rightful landowners. There was an appeal by some ■■■■ representatives to the Courts, which was resolved by meetings between SW and LOs. LARP was finalized and submitted to ADB/WB for review and approval on 27 th September 2024. MOU with Ziata source landowners was reviewed by Attorney General and then signed on 29 th September 2024 to allow contractor to commence work Ziata site. The LARP was updated to include the signed MOU and was submitted to WB on 23 rd December 2024 for approval and no objection. Revised LARP was again submitted to WB on 5 th March 2025 for approval. The LARP was cleared on 7 th March 2025. Construction works therefore commenced immediately after.
7	Munda	LARP B	Yes. The draft is currently in review by SW	The LARP is ongoing pending investigation works on the airport bore by technical groups. Since SW intends to install the pipelines within the road right of way, the western provincial government or COL will be consulted to sign relevant MOUs particularly within the Lambete area. The roads within Dunde are custom owned by the landowning clans. A new reservoir site has been identified which is owned by COL who has given the consent to construct a reservoir there. Therefore the site at Polovesu, which is customary owned may no longer be required but still awaiting the subproject management to confirm this. A more definite decision will be made after the investigation work on the airport bore is complete.

	UWSSSP Subprojects	Safeguard Documents – IR Category	LARP / DDR Prepared	Status of subproject implementation Remarks
8	Gizo	LARP B	Yes.	No progress. SW is not pursuing any negotiation with APs and land title holders until outcomes from further hydrogeological investigations are completed. Safeguards work is placed on hold awaiting further advice from the subproject management team to proceed. Joint work is being undertaken by SW, SPC (technical) and led by of Water Resource Division. Drilling expected to start in September 2025.
<i>Honiara sewer rehabilitation and expansion program</i>				
9	Honiara Wastewater - Pump Stations and Collector Mains Western Section.	LARP B	Yes. The draft is pending appropriate MOUs with affected parties	Pre-construction phase. The LARP draft is pending some land title holders giving consent through signing of MOU with SW for easement access. One of the title holders, SSEC, signed the MOU with SW on 4 th April 2024. Though SW aimed to incorporate the remaining relevant easement agreements with title holders in the last reporting period, it did not happen. . SW will aim to achieve the signed MOUs within the next SMR reporting period.
10	Honiara Wastewater - Pump Stations and Collector Mains Eastern System	LARP B	Yes. Draft LARP prepared	Not yet approved. The LARP is still pending negotiations and signing of MOUs and compensation agreements between SW and 3 title holders. In all these 3 cases, the COL will be assisting SW in acquiring land required for easement. There is still not a prescribed time to submit this LARP. Once the sites are secured, the LARP can be finalised for submission. Expecting this to happen Q1 in 2026.
11	Honiara Wastewater - Outfalls	LARP B	In progress.	The outfalls do not have a separate LARP but come under the eastern and western section LARPs which are still in progress. Pre-construction phase.
12	Honiara Wastewater: Ela Motors - Goodwood	LARP B	Yes. LARP approved by DP on 6 September 2022 and fully implemented.	The Goodwood section has a separate LARP developed specifically ahead of the rest of the eastern wastewater system due to the urgency to construct

	UWSSSP Subprojects	Safeguard Documents – IR Category	LARP / DDR Prepared	Status of subproject implementation Remarks
	section: pump station and associated lines			that section in time for the South Pacific Games in 2023. The LARP has been implemented. Construction works continuing.
13	Sewer works: King George VI - Ranadi Rd intersection	LARP not required.	Yes. Due diligence completed	Construction completed under 12 months. Defect Liability Period lapsed on 30 November 2023.
14	Ministry of Fisheries - Kukum Road	DDR (LARP not required)	Yes. DDR completed	Construction work has been completed by McConnell Dowell within this reporting period.
15	Honiara Watershed Management Project	DDR	Yes. DDR approved.	Start-up implementation of payment for services (PES) activities through watershed protection and forest restoration have begun - to incentivise land use changes and provide alternative livelihood opportunities for LOs and land users. A baseline assessment and stakeholder analysis has been conducted by Nakau in Kovi, Kohove, and Kongulai catchment areas. Intensive consultation and planning is being undertaken first with the Kohove community, who consented to initiate development activities in June 2025, signing an MOU with SW. A project committee representing landowners has been established through participatory activities led by Live & Learn SI.
UWSSSP (Phase 2) Subprojects delivered by SMEC				
16	Auki Water Network Expansion	LARP B	No.	Not yet developed
17	Honiara Water Mains Replacement	LDDR B	Prepared	First submission to ADB/WB for clearance.

	UWSSSP Subprojects	Safeguard Documents – IR Category	LARP / DDR Prepared	Status of subproject implementation Remarks
18	Honiara Wastewater Pipeline Rehabilitation	LARP B	No	Not yet developed
19	Honiara Water Network Expansion	LARP B	No	Not yet developed. The design is not yet completed, but a PER has been drafted. Once the design is confirmed, a LARP will be developed.

4.2. Honiara Water Supply (HNWS)

48. The three (3) LARPs for the Honiara Water Supply Project which have already been approved by ADB/WB are: (i) Kongulai WTP; (ii) Water Mains Upgrading; and (iii) Augmenting Reservoir Capacity (Panatina, Tasahe, and Titinge reservoirs). All land required for the project, both government and privately owned, has been acquired. Implementation of the relevant LARPs has been completed except for two outstanding resettlement payments to two APs for the HNWS Trunk Main.

49. **HNWS Trunk Mains LARP:** Two resettlement payments to APs are outstanding under the HNWS Trunk Mains LARP as follows:

- **SDA Church:** There is one outstanding payment for SDA Church to complete the total payment for the easement access (area of 84.4 m²). Eighty percent (SBD 81,024) of the payment has been paid with the remaining 20% to be paid after the survey and easement instruments have been executed. This is still ongoing. This is for water supply trunk main East Kolaridge to Kukum section. Works on this section have commenced and near completion. The initial survey was carried out in November 2022 but pipe alignment was reviewed in Q4 2024 due to site constraints (existing concrete slab and vegetation located within proposed alignment).
- **Mr. K:** During the development of the HNWS Trunk Mains LARP, the alignment of the pipeline within Mr K's land at White River area, had not been finalised. At that time, an agreement was made with, Mr. K in December 2020 that after construction of the new pipeline, a survey for the subdivision for easement of approximately 2.5 m from the pipe centreline within his land will be performed and associated payments made to him immediately after. The cost will be calculated based on the rates used in the Sales Agreement in January 2020 which was \$217.00 per SQM. The survey for the subdivision for easement is yet to be carried out. Therefore, no progress from last reporting period.

50. **Kongulai WTP LARP:** The Kongulai WTP LARP has been fully implemented. Works started on site including the setting up of a site office, workers' rest bays and sanitation facilities in 2023. Excavation works also commenced after a stop work notice was lifted by SW following the implementation of sedimentation control works on site by the contractor. However, progress was very slow, and there were so many Notices to the Contractor (NTCs), the contractor was eventually offered an extension of time (with conditions), but refused the conditions so, the contract was effectively terminated by SW. Work ceased on site on 13th December 2023, and the issue is under litigation. A court of Appeal hearing is expected to occur in October 2025.

51. **Community Advisory Committee (CAC)** (Kongulai, White River, Tasahe): The first CAC was established on 1 February 2023 for the Kongulai WTP and trunk main works by SW. CACs for other Honiara subprojects (including trunk mains, reservoirs and wastewater) according to the TOR were supposed to be established by the contractor who have not actioned this due to limited resources. SW has also attempted to support the contractor by sending out open invitations to be part of the CAC but received no responses back most probably because these areas where works are happening are either within commercial/business zones or near residences where working people are living who may not have the time to perform this voluntary role. No CAC was established during this reporting period.

52. However, under UWSSSP phase 2 trunk mains work, the pipeline will run through peri urban areas where the communities are more cohesive and therefore it should be feasible to set up a CAC As for the Kongulai CAC, the group has not been active for some time as some members of the committee were also involved in the disputes which defeats the idea or neutrality of the CAC. SW will continue to work closely with the contractors and communities to address these issues and also explore the possibility of establishing a stakeholder advisory committee that consist of residents or business owners if no progress is observed.

53. **HNWS Reservoirs:** The LARP for HNWS reservoirs (Panatina, Titinge and Tasahe Reservoirs) has been completed and fully implemented. There are no resettlement issues relating to the sites during the reporting period. Construction is about 80 percent complete. Works are expected to be completed at the end of Q1 in 2026.

4.3. Honiara Wastewater Project (HNWW) LARP

54. The Honiara wastewater subproject is separated into 2 sections: The Eastern Section which is defined by the proposed network starting at Point Cruz and ending at NRH (also referred to as NRH section) and the Western Section which runs from the Bahai Area up to Ranadi/King George area. The LARPs for the two sections were initially drafted by SUEZ (design consultant) and reviewed by SW, while the detailed designs were being finalised in 2022. After their contract lapsed at the end of 2022, SW continued with updating the document and negotiating with APs which have proven to be a long and complex process but have succeeded in establish agreements with landowners (title holders). Negotiations with land title holders for easement access and land acquisition continued during the reporting period, though no new MOU was signed during this period. The status of the negotiations for MoUs with the identified APs for both the Western and the Eastern HNWW are discussed in **Table 6**. To achieve consistencies across the LARPs, all negotiations and agreements have been or will be, captured in MOUs between SW and the respective APs or land title holders.

55. In the Eastern wastewater system, the Ranadi to Goodwood Outfall section had a separate LARP developed specifically ahead of the rest of the eastern wastewater system, due to the urgency to construct that section in time for the Pacific Games in November 2023. The Goodwood LARP received an all clear from the development partners on 6th September 2022 and construction proceeded which was supposed to take 10 months. However, Pacific Engineering Project Limited (PEP) who was awarded the contract to construct this section of the infrastructure was late starting, the system was not finished in time for the Pacific Games. The pump station and outfall at Goodwood Timbers has been removed from the scope, as they are no longer required. The project will now end at the last manhole at Goodwood Timbers, where it will interface with the permanent Ranadi Ocean Outfall. Works are continuing with nearly all sewer pipe section completed by November 2024, but construction of 16 manholes still yet to be completed. The likely completion date was expected to be around mid-2025. At the end of this reporting period, not all manholes have been installed.

56. **HNWW Eastern:** For the HNWW Eastern LARP, there are two main challenge that SW is dealing with and has consulted the COL for assistance:

- [REDACTED]: Although the owner of the proposed site for the Naha wastewater pumping station located along the Kukum Highway, did not object to SW constructing the pump station within his land (320m²), he could not agree to any of the numerous offers that SW has proposed. SW therefore asked the Ministry of Lands (MOL) for resumption of the land and is awaiting progress from MOL. There has been no progress on this at the end of the reporting period.
- [REDACTED]: The design by Suez, the proposed the siting of the Ranadi PS within the road reserve in front of the Silent World Compound with an overflow pipe (for emergency purposes only) to go through the western boundary fence of the compound owned by [REDACTED] Company. Despite constant follow-up, TH has remained unresponsive to all communications. SW therefore decided to liaise with [REDACTED] (DL), who share boundary the same boundary with TH hoping they would be happy to cooperate with SW. However, this approach was also unsuccessful. SW PMU finally met with TH management on 13th February 2025. Following this, a final notice and offer based on that discussion, will be sent to TH. The SW Legal Officer is still finalising the details in the MOU and should be sent to TH during Q3. If TH do not respond, SW will seek approval from COL for the resumption of the land.

57. **HNWW Western:** In the LARP for HNWW Western section, there are no concerns in relation to acquiring land for easement access or sublease arrangements. The status of negotiations with the respective land title owners are presented in Table 6 with Solomon Islands Ports Authority (SIPA) being the only AP that SW is still negotiating with for an easement access.

- **Solomon Islands Ports Authority (SIPA):** Pipelines and a PS is intended to be installed within the land owned by SIPA. SW engaged the services of a valuer to value all the lands required for the pipes and the PS and put together a draft MOU with offers inserted based on the valuation but has yet to receive a response from SIPA. SW will continue to follow up with SIPA in the next reporting period.
- **Seafront Trustees:** SW has approved an increased offer as requested by the seafront trustees for the outfall sections (both eastern and western). However, the legality of ownership of the seafront was contested in court by the Commissioner of Land (COL). Feedback was received from COL on 7th June 2024 saying the Seafront Trustees lost their court case, and the Registrar of Titles is to de-register the land. The court proceeding was in favour of COL to have that site deregistered from the claimants and therefore SW is free to install the pipelines.

4.4. Provincial water supplies

58. **Tulagi Water Supply:** All resettlement activities have been completed. The APs have received their payments and there are no other outstanding payments or pending MoUs. SW proposed to scale back the scheme due to finance considerations, and the project is currently on hold.

59. **Noro Water Supply:** The Noro LARP was completed in September and submitted to WB/ADB for approval on 27th September 2024. An MOU was signed on 29th September with the respective trustees for the lands where the Noro Water Supply upgrade works will take place. The LARP was updated to include the signed MOU, and was submitted to WB on 23rd December 2024 for approval and no objection. The approval came through in 7 March 2025.

60. The COL, appointed an acquisition officer (AO) to facilitate the proper processes to have the 3 parcels of Ziata land legally registered under the rightful landowners. This would enable SW to formally establish a lease agreement with them. So far, two trustees have been paid under the MoU arrangement, while SW has paused payment for the third, until internal tribal issues are resolved. While there were 11 appeals against the CoL determination, the outcome of the appeals is not yet through, and SW is consistently monitoring that. However, the support for the project remains high, and the eventual signing of the MoU means that agreement has been reached among the majority of the LOs, to allow civil works to start.

61. **Munda Water Supply:** Suez developed a draft LARP and the majority of the design for Munda subproject in 2022, after consultations were conducted with customary and registered landowners who all supported the project, because of the need for water in Munda. Suez however, were unable to complete the hydrogeological testing and therefore the design was incomplete. Owners of the customary lands in Dundu also provided support/consent letters to SW; to allow SW access to carry out pipeline works along the roadway. The Munda water supply design includes a reservoir, as part of the Munda system.

A site at Polovesu had been identified by Suez for this purpose which was 'owned' by the [REDACTED] family who are also residing there. Polovesu, though it is customary, has about four generations of the [REDACTED] family living on it. This family is part of the Kazakuru clan, but is recognised by them, as having primary rights to the land. The land is therefore considered customary. The [REDACTED] family has been consulted on numerous occasions, who maintained their support for the project and for siting of the reservoir there. SW developed a draft MOU with the [REDACTED] family on 21st November 2022. There has not yet been any response to it, but new options are now being considered. To ensure that legal instruments were established to allow SW to have a proper lease agreement with the owners for the proposed tank site, the COL would have had to initiate a land acquisition process similar to Noro.

SW commissioned SMEC to undertake more hydrogeological testing on customary lands and to incorporate the findings in the final design, before providing instructions to the COL for the acquisition process.

However, SW investigated the feasibility of other possible reservoir and, bore sites which are on CoL land. This proved a better option and is now being acquired by SW from CoL. The sale will be considered by the Land Board at their next meeting in July. Drilling of the bore holes to be undertaken by SMEC is not yet completed.

62. The maps of the proposed pipeline routes in Munda have been provided in the draft LARP but there is still the need to verify that the pipelines will not encroach into private properties. Suez stated that the proposed pipelines will follow the roads. SW will seek approval from the western provincial government in the next reporting period

for easement access along the roadway. The roads within Dundee area are customary, and there has already been a letter of support and consent from the community's chiefs to have the pipeline installed along the road.

63. The proposed airport bore, north of the runway is within the land owned by the commissioner and therefore SW is going to prepare an MOU with the COL to allow access to rehabilitate and operate the borehole. At this stage no tests have been performed on the borehole to determine its state and yield. SMEC is responsible to undertake the tests potentially in the next reporting period. If the yield at the airport bore is discovered to be inadequate, SW will have to look for an alternative bore site within CoL's land or the Western Provincial Government land. With SW priorities focused on Honiara infrastructure and other areas, progress on the Munda LARP has been slow.

64. **Gizo Water Supply:** Detailed design works on the pipelines were completed. The hydrogeological survey of three boreholes within land owned by the Western Provincial Government, was completed at the end of 2022 with results that show the yield is insufficient and that boreholes need to be re-tested and additional sources found. SW conducted another bore investigation. SW is opting for further geophysical and borehole investigation. The drilling will be done in September, as joint work with SW, SPC (providing technical inputs), and the Water Resources Division as the lead. There will be two sites, at Mile Two and Mile Six.

65. The preparation of the LARP and identification of APs for the complete network was undertaken by Suez in 2022 but not completed. However, it was established with Suez during the designing of the system, that all pipe routes must follow the road reserves. During the reporting period, the progress of the Gizo LARP remained unchanged. This LARP is pending results from the water source investigations; however, SW has confirmed that this is a priority project. SW does not want to pursue any negotiations with APs until after the borehole investigation work has been completed, to prove which water source sites are viable.

66. The list of LARPs and their approval status is shown on Table 5 (above), while the following Table 6 below, describes the progress of negotiations with landowners:

Table 6: Status of negotiations with land title holders (for easement access or purchase)

Names of Affected Parties	Type	Requirement for LARP	Status as of 30 th June 2025	Comments
HNWW – Western Section LARP (Point Cruz to NRH)				
Solomon Islands Ports Authority (SIPA)	Pump station (PS) and pipelines	MOU for easement access for pipeline and PS.	Ongoing	SW made compensation offers to SIPA for proposed easements in Q4 2023, including in a draft MOU. Once the compensation rates are agreed upon by SIPA, SW anticipates that SIPA will sign the MOU. This was expected to happen in Q4 2023, but SIPA is yet to respond to SW on the offers made to them. No official response received in this reporting period. SW will follow up and remains hopeful to resolve this by Q4 2025. Further updates will be provided in the next reporting period.
SSEC	Pipelines	MOU for easement access.	Completed. Signed 4 th April 2024.	SW and SSEC have agreed on a compensation figure and an MOU was finally signed in April 2024. First part payment has been paid with the second part payment will be released after the execution of lease instrument.
Uniting Church	Pipelines	MOU for easement access	Completed. MoU signed on 28 th June 2024	MOU was finally signed on 28 th June 2024 and the first part of payment paid to UC. The second part will be paid after the lease instrument is executed.
MID	Pipelines	MOU for easement access	Not yet	For works on roadway between Point Cruz – NRH & Tuvaruhu-NRH. This section is not amongst the priority areas. However, an MOU with MID should be established in 2025.
MHMS & COL	Pipelines within NRH and 2 x Pump Stations	MOU for easement access	Signed (18 Aug 2022)	Completed
Lord Howe Settlement (Ontong Java community)	Pipelines	MOU for easement access	Signed (6 June 23)	An MOU with OJC was signed on 6 June 2023, with the first 80% payment executed on 8th June 2023. 20% payment will be made after execution of easement instrument.
Seafront Trustees	Outfall	MOU for easement access	Ongoing	COL won the court case for this contested land which is to be deregistered from the claimants. CoL has confirmed to SW that they can proceed with this project as “government work”, and legal documents are being checked by SW lawyer.

Names of Affected Parties	Type	Requirement for LARP	Status as of 30 th June 2025	Comments
HNWW – Eastern Section LARP (Bahai to Ranadi)				
MID	Pipelines (Bahai-Ministry of Fisheries area)	MOU for easement access	Not yet	Anticipated MOU draft by SW will be signed in Q1 2025 but this did not eventuate this reporting period.
KCM	NAHA PS	FTE Payment for required land size (land acquisition)	Ongoing	SW has been following MOL progress on resumption of the land. Anticipating resumption to be completed in Q 1 of 2026
MID	Pipelines (Fisheries to Ranadi Round – about)	MOU for easement access	Signed	This project has been taken over by SIG which is now complete.
MID	Ranadi PS and Pipelines	MOU for easement access and consent	Signed	30 November 2022
	Overflow pipe	MOU for easement access	Ongoing	Developing infrastructure in built-up areas like Ranadi is challenging due to limited land, high costs and technical constraints. The TH site was selected as it meets design requirements without affecting permanent structures. Consultations with TH began in 2022, but responses have been inconsistent despite repeated follow-ups. Alternative sites were explored but found unfeasible. SW PMU met with TH management on 13 February 2025 and a final notice and offer will be issued following that discussion. The SW Legal Officer is finalizing the MOU, and is expected to be sent in Q3. If TH does not respond, SW will seek CoL approval through the Lands Board to resume the land. This is deemed as a last resort if all negotiations fail and is mandated under the Lands and Titles Act for public interest purposes.
MID	Goodwood PS and Pipelines	MOU for easement access and consent	Signed	PS (18 August 2022) Pipeline (2 September 2022)
COL & HCC	Ranadi Landfill PS	MOU for Consent	Signed	October 2022
GPPOL	Pipeline	MOU for easement access	Ongoing	GPPOL has agreed to move the easement back to the original easement along the eastern boundary of GPPOL

Names of Affected Parties	Type	Requirement for LARP	Status as of 30 th June 2025	Comments
				property, with a concrete slab cover which is being designed. The last discussions were held in March 2025, with no result. SW Board has approved compulsory acquisition / resumption through CoL.
Provincial Water Supply – Munda LARP				
██████, land occupant	Pipeline and Reservoir	MOU for consent and clearance of trees and crops	Ongoing	Draft MOU already shared with the █████ family on 21 November. A response of support was provided by the █████ family in December 2023, but they requested to meet with SW to discuss compensation rates. Meeting in 2023 did not eventuate. An alternative option of relocating the new tank site to the old Munda tank site (which is on CoL registered land) is being pursued and approved.
COL	Borehole and pipeline	MOU for consent	Not Yet	Consultation has been done with MCA. SW need to draft an MOU with the COL but after the bore has been tested for viability.
Provincial Water Supply - Noro LARP				
Ziata Tribal Owners (Kazakuru)	Upgrade of existing Infrastructure	Supporting letter from newly appointed trustees for the project to proceed	LARP completed and awaiting approval of donors. MOU with LOs signed to agree start of civil works.	The MOL initiated an acquisition process in Q3 2023 for the 3 plots of land where the proposed upgrade works will be undertaken. SW finally signed an MOU with the LOs on 29 th October 2024, to allow civil works to start. The LARP was cleared on 7 March 2025 by WB with the inclusion of the signed MOU. Construction has commenced.
Provincial Water Supply - GIZO LARP				
Western Provincial Government (WPG)	Pipelines	MOU for easement access	Not yet	Pipeline routes will only follow the road right of way. The Western Provincial Government gave consent in November 2022, for work to proceed in Gizo. Reinvestigation of sources is still pending. The drilling will be done in September, as joint work with SW, SPC (providing technical input), and the Water Resources Division as the lead. There will be two sites, Mile Two and Mile Six.
██████ & WPG	Reservoir	MOU for land acquisition	Complete	MOU executed in Q2 2023

4.5. Outstanding Resettlement Activities

67. The Safeguards Team continues to monitor the construction works, where resettlement provisions have been completed. Monitoring of site works is normally done in coordination with the National Social Safeguards Specialist, (a position which has just been filled in June 2025) and National Environment Safeguards Specialist in SW PMU. The contractors also submit monthly safeguards monitoring reports, which are reviewed by the PMU staff, who provide feedback through a 'Notice to Contractor' (NTC) system. There are currently four CESMPs being monitored: the Honiara Water Supply Trunk Mains, the Honiara Water Supply Reservoir subproject, Honiara Wastewater – Ranadi to Goodwood section and the Noro WTP project. For LARPs with remaining outstanding compensations, the details are reflected in sections 4.2, 4.3 and 4.4.

68. There will be future resettlement and compensation requirements for the Eastern and Western HNWW subprojects and the provincial water supply projects including Munda and Gizo for which LARPs are still progressing. The Noro LARP will continue to be monitored and updated when and if required. During the reporting period, efforts have been made on consultations and negotiations with APs relating to the ongoing LARPs.

4.6. Matters of significant importance

69. The project's Environmental Officer and Community Liaison Officer have both resigned to join other organisations in June. Candidates for their replacements have been shortlisted with interviews to be conducted in early July 2025. In the meantime, the Environmental and Social Management Officer (national), national social officer, and international environment and social specialists are stepping in to uphold these responsibilities.

70. PMU is facing challenges in ensuring the Honiara contractors uphold their CESMP requirements including allocating adequate resources for safeguards. For this reporting period, the contractor recorded no grievances which is unrealistic. Though SW requested that they provide reasons for why there is no documented grievances, these requests remain unanswered. The reason for no recorded grievances would be because there are no staff responsible to manage this process including documenting them. There are only a few occasions where the contractor submitted NTPMs to report incidents but nothing more. Their permanent safeguard officer resigned in the previous year and that position has not been filled until now. They hired an international safeguards consultant who is based abroad whose main responsibility is to review safeguards monthly monitoring reports before they are submitted to SW. The quality of the reports are only as good as the information provided to him by the contractor. The consultant mentioned that he flew to Honiara and visited the construction sites a few months ago but that is not adequate.

71. To counter this, SW safeguards team is planning to have fortnightly meetings with the contractors to discuss safeguards issues and to assist to resolve any safeguard gaps they may have. The first meeting is planned for 15 August.

5. COMPLIANCE WITH PROJECT SAFEGUARDS COVENANTS

72. The project is addressing project related covenants of ADB. Appendix 1: Consultation for the Honiara Water Mains Rehabilitation Works – UWSSSP Phase 2 provides a summary of the compliance with the covenants included in the ADB and SIG project agreement.

6. PUBLIC CONSULTATION, DISCLOSURE, CAPACITY BUILDING

73. Public consultations have been held to comply with plans in the IEE (PER), the LARP and the Project's Stakeholder Engagement Plan (SEP). The consultations are guided by WB and ADB best practice as outlined in their manuals and guidance notes.⁴

6.1. Public Consultation Activities

74. Consultations, information disclosure and awareness raising activities have been ongoing during the reporting period. A summary of the consultations conducted are in Table 7 which also include information on contractors' consultations. With construction works currently underway, the SW PMU continues to provide support and oversight of the contractors' consultation requirements to ensure that the APs and the public are properly informed in adequate time before work proceeds and in the event that work completion is delayed. All consultation materials drafted by the contractor have to go through SW management for clearance before they are used to ensure messaging is correct. The PMU CLO has been instrumental in facilitating this requirement. As noted in the table below, the contractors in Honiara often overlooked documenting the participants. SW has been reminding them consistently to improve on this.

75. One of the key consultation efforts that SW had undertaken was for the Honiara Trunk main rehabilitation project under phase 2. The consultation went for 10 days, 21-Jan-25 to 04-Feb-25. The consultation activities include distribution of brochures, posting of notices, conducting one-on-one and group meetings, and interviewing residents in the subproject area from Tasahe in the west to Panatina in the east. A total of 17 communities were consulted including two (2) schools at Lau Valley and Titinge School. Approximately 522 people were consulted, including residents or communities living along the pipeline route and access. Amongst those consulted were 185 (35%) were females and 337 (65%) males. The summary of the meetings is in Appendix 1.

⁴ World Bank, 2012, *Stakeholder Consultations in Investment Operations: Guidance Note*.
ADB, 2012, *Strengthening Participation for Development Results: An ADB Guide to Participation*

Table 7: Consultations held within the reporting period

AWARENESS REGISTRY Q1 2025								
Date	Awareness Type/Project	Community	SW Action	Key Contacts	Facilitator	SW Team	Participants	Key Message
11-Jan-25	Trunk Mains	Tanahue Road (Kukum)	Provide Oversight		PEP		Female - 4 Male - 8	To inform all stakeholders, residents and market vendors at Kukum area that construction for the trunk mains (pipelines) will commence night works on Monday, 13 th of January 2025.
20-Jan-25	Trunk Mains	Kongulai - White River	Provide Oversight		PEP		No information from contractor	Project information for residents and communities
20-Jan-25	10km Honiara Water Mains Replacement Project	Multiple sites across Honiara stretching from Ngossi in the West to Panatina Reservoir in the East including over 10 km of water mains replacements	Carry out door to door consultation		SW Staff & SW casuals	[REDACTED]	Female – 185 Male - 337	The project is expected to commence in the first quarter of 2025 and will take approximately 24 months to complete. Initial activities within local communities will begin with Unexploded Ordnance (UXO) detection, followed by potholing at intervals of approximately every 50 meters along the route of existing and proposed water mains. This work aims to locate all utility services and will be accompanied by

								<p>survey activities to accurately map all relevant features. Any holes excavated during this phase will be refilled once the work is completed.</p> <p>Following this, there will be a temporary pause in on-site activities—likely lasting 2 to 3 months—while design updates are carried out based on the findings. Once the revised design is finalized, the contractor will be mobilized to begin trenching and laying the new water main. Portions of the water main will run within or alongside existing roads, while other sections will cross private properties. For works affecting private land, Solomon Water and its representatives will engage directly with each landowner to coordinate access and activities according to requirement set out in the LARP.</p>
--	--	--	--	--	--	--	--	--

14-Feb-25	Trunk Mains	Betikama Junction, Burnscreek	Provide Oversight		PEP		Not recorded	To inform residents, Business owners along Burns Creek, Burns Creek and Betikama college staff and students and the general road users that construction of the water trunk mains (pipelines) along the Burns Creek culvert footpath and Betikama Road crossing will commence night works from 7pm to 5am from Friday, February 14 th , 2025.
22-Feb-25	Trunk Mains	East Kola	Provide Oversight		PEP		Not recorded	Solomon Water and its contractors would like to inform residents of East Kola and the public that the construction of the water trunk mains (pipelines, PRV & Flow Meter) will commence on 22 February 2025.
26-Feb-25	Trunk Mains	East Kola	Provide Oversight		PEP		Female-1 Male - 4	To inform all stakeholders, residents along the East Kola to Kukum highway that construction for the trunk mains (pipelines), chamber constructions will commence day time since Monday, 3 rd March 2025.

17 Mar to 28 March	Catchment Baseline Survey	Vatukola	Participated in conducting Survey		SW	██████ ██████ ██████	Not recorded	The livelihood survey aims to collect relevant baseline data, enabling the identification of appropriate social impact indicators to be monitored at specific intervals throughout the project lifecycle.
28-Mar- 25	Goodwood Sewer Works	Solrice Rd, from AMJ to Ranadi Road Junction	Provide Oversight		PEP		Not recorded	Inform residents and Business owners along Solrice Road to Ranadi Road that the construction of the Wastewater system upgrade (Installation of Manholes) will commence night works from 7pm to 6am on Friday, 28th of March 2025. This Manhole work will take approximately 4 months.
03-Apr- 25	Goodwood Sewer Works	Ranadi Road	Provide Oversight		PEP		Registry & Minutes not received	

05-May-25	Trunk Mains	East Kola to Kukum SDA	Provide Oversight		PEP		Registry & Minutes not received	
10-May-25	Trunk Mains	Rove Bulkshop	Provide Oversight		PEP		Male – 2 Female - 3	To inform nearby residents and stakeholders at Rove (Mendana Road/Tasahe Road Junction) that excavation works will be carried outside Rove Bulk Shop side of the road. This is for the rectification works of the DN200 water pipe. There may be associated disturbances such as noise and disruption to traffic flow and pedestrian movement.
26 – 30 May -25	10km Pipeline Replacement PER	Panatina To Tasahe areas	Support ECD with meetings		MEC DM & SW			A public environmental hearing mandated under section 22 of the Environmental Act 1998 prior to issuance of a development consent. During this time, the contents of the Public Environmental Report (PER) will be presented while members of the public will be given the opportunity to ask questions or raise any concerns on the intended development plan for

								the Honiara Water Mains Replacement Project.
15 – May - 25	Trunk Mains	East Kola – Kukum SDA	Provide Oversight		PEP		Registry & Minutes not received	Solomon Water and its contractors informed residents of East Kola and the public that half of the southern lane/ road near to Kukum SDA church will be closed on Thursday, 15 May 2025 . NOTE: Pedestrian access will be closed and traffic controllers will be on site to direct pedestrians during the duration of work.
28 – May - 25	Trunk Mains	East Kola – Kukum SDA	Provide Oversight		PEP		Registry & Minutes not received	Solomon Water and its contractors informed residents of East Kola and the public that half of the southern lane/ road near to Kukum SDA church will be closed on Wednesday, 28 May 2025 .
3 June- 25	Kongulai Catchment	MOFR Conference Room						Intended to set up a taskforce consisting of forestry and SW with the support of landowners to

								protect the Kongulai Catchment. This include
6 – June - 25	Auki Catchment	Auki	Facilitate Consultation		SW	<div> <div></div> <div></div> <div></div> <div></div> <div></div> <div></div> </div>	Male –10 Female - 5	<p>The objective of this awareness & Consultation is to inform the Settlers of SW's proposed activities to be carry out within the catchment area including;</p> <ul style="list-style-type: none"> - Update the Household Heads & Land Status of Auki Catchment, <ul style="list-style-type: none"> • to the Settlers or developers • Registered Parcels Within the Catchment area - SIWA Boreholes & Catchment Fencing Project, <ul style="list-style-type: none"> • Fencing of undeveloped land in the immediate catchment area to be prioritised now to avoid further

								<p>development/expansion by the settlers/others.</p> <p>- SIWA Protection of Borehole Water Quality,</p> <p>Stop further developments in the Catchment area to mitigate contamination risks. Allowing more house to be built will increase waste water management burden.</p> <p>Establish a buffer zone around the boreholes, the buffer zone should be at least twice the depth of the boreholes. This is not feasible along the steep sections bordering boreholes 2 and 3.</p>
--	--	--	--	--	--	--	--	---

6.1.Planned Consultation Activities for July-December 2025

76. There will be on-going consultations with Honiara and provincial communities and particularly with landowners where land issues are likely to be obstacles to implementation of both Honiara and provincial water supply plans. As outlined in the updated Stakeholder Engagement Plan, Community Advisory Committees, (CACs) are planned for feasible areas in Honiara and the provinces. The next CAC to set up will be for the Honiara Trunk main rehabilitation subproject which will go out to tender in early Q3 of this year. SW will continue to assist contractors to establish the CACs for Honiara sites, in order to facilitate participation of community members during construction. SW will also be providing oversight on consultations that the contractor will require to do. Given the construction delays it remains critically important to keep the community well informed about the issues and delays in implementation.

6.2 Capacity Building and Training

77. The International Environmental and Social Safeguards specialists have continued to provide specialist inputs, and to mentor and support SW staff in preparation of safeguards documents. The GAP monitoring framework was updated last year, after discussions between consultants, the SW safeguards team, and ADB advisors. Training on the GRM will be required once the revised process and SOPs are completed. It was initially expected that GRM and SOPs are completed and reviewed within this reporting period but this is not the case, although the first draft has been done SW is committed to fulfil this within the next reporting period.

78. SW is also planning to do a fortnightly meeting with the contractor as means to bridge working gaps between the two organisations but more importantly to enable SW to help the contractor to help establish a working system to record and report grievances, near misses and incidents and other non-compliances -which is still a challenge during this reporting period. SW hope to have the first, face to face meeting in August.

7. GRIEVANCE REDRESS MECHANISM (GRM)

77. SW established a GRM to deal with grievances from the general public and affected persons in relation to all SW managed projects and covering all stages of SW's projects' cycle. The GRM covers both social and environmental grievances and care has been taken to ensure confidentiality for those making complaints. The focal point of contact for the GRM is the national Social Safeguards Consultant who was only recruited in June and the Community Liaison Officer (CLO) who unfortunately left office in June. This information is continuously relayed to the customer service front should anyone with concerns and questions approach SW regarding the project. The existence of this GRM has been communicated to communities during project consultation with the names and contacts of the focal points also made available to the communities during consultations.

78. The GRM is a three-stage process (currently under review) which allows for appeals at each stage: complaints are forwarded to the Project Manager who tries to solve the complaint. If a solution cannot be reached the complaint is referred upwards first to the Chief Executive Officer of SW and then, if no resolution is found, to a Grievance Tribunal of three people: (i) a member of the Board of SW; (ii) the Permanent Secretary (or designate) of the Ministry of Mines, Energy and Rural Electrification; (iii) an independent member jointly selected by Chief Executive Officer of SW and Board Chairman. Within five working days of the Tribunal meeting a formal response is issued to the aggrieved party outlining the Tribunal's decision on the grievance.

79. The decision is final as far as the SW grievance process is concerned but if this is still not accepted the complainant has the option of taking the complaint to the Solomon Islands judicial system. Disclosure of the GRM process and awareness of how it works has been delivered through the many community consultations.

80. The Safeguards team assisted contractors to ensure that GRM is included in their CESMP and that they must provide training for staff on how the process works. It was also emphasised that concerns related to SEAH must be immediately reported to SW and handled separately by qualified people or authorities. The contractor's CESMP states how contractors should respond to any incidents including the requirement for all employment contracts to have a signed Code of Conduct for employees. However, this process was assessed to be needing improvement (by the ADB/WB Mission), and the Safeguards and Gender team are currently revising the GRM for SW, especially to ensure that there is a separate confidential reporting channel for SEAH complaints. This will make use of local service providers to ensure victim/survivors of SEAH receive confidential support from qualified experts. This will put the victim's needs and wishes at the centre of the process. A draft of the revised GRM system will be available in Q3 and will confirm roles and Standard Operating Procedures (SOPs), and update documents. Training will then be provided for engineers, project managers, CLOs, and contractors, to refresh their understanding and inform them about how the revised process will work.

81. During this reporting period the contractors in Honiara reported not receiving any grievances at all though this is not factual. This only reflects the gap in the contractor's capacity to receive, record/document and process these grievances and other safeguards

related responsibilities. The contractors have been without a safeguards officer for a period of time after the resignation of their ES officer in the previous year. The contractor in the past was able to document grievances but somehow became complacent overtime and needed to be continuously reminded of this responsibility. SW is planning to work with the contractors in the next reporting period to set up their system or finding ways to make their current system work, of receiving and processing grievances. The Noro contractor, on the other hand recorded about 3 grievances during this reporting period as noted below all of them relating to the same local.

82. During this reporting period, there were 6 recorded complaints/grievances shown in table 8 below.

GRIEVANCE REPORT						
Officer receiving grievance & date	Project	Description of grievance	Responsible Team	Action	Outcome	Status
██████████ 07 Nov 24	Trunk Mains - East Kola to Kukum Section	Exposure of open trenches has caused near miss incidents where student at Florence Young School almost got in an accident when crossing the road	Contract or PEP	Project engineer advised PEP to have steel plates over the trench and secure with barricades.	Temporary steel plates & barricades installed pending completion works and full reinstatement by end of Q3 2025.	Open
██████████ (Referred to ██████████ & ██████████) 12 Apr 25	Trunk Mains – Rove Bulk Shop Section	We have observed a contractor doing some work next to the Tea Shop at Rove. May we request the timeline as to when this project will be completed? Also request an insight of this project, please.	Contract or PEP/ SW	Project Manager provided project updates to Bulk Shop Staff, PRV chamber is to be installed next to Rove Bulk Shop Tea Shop, and estimated timeline of works is 3 weeks.	Email acknowledged by Bulkshop Manager	Closed

<p>15 May 25</p>	<p>Trunk Mains – Western Section</p>	<p>A White River resident expressed concerns over the Trunk Main contractor's poor performance, citing inadequate barriers, signage, and equipment. The contractor allegedly ignored stop-work notices from Solomon Water and has operated without quality assurance or quality control for six months. The complainant urges the ADB to consider terminating the contractor's contract due to ineffectiveness.</p>	<p>PEP/SW</p>	<p>SW Project Manager issued NTC 207A on 16-May-25 to the contractor to stop work until all remedial measures are in place. Contractor's CESMP performance issues was raised during ADB/WB Mission Review.</p>	<p>Contractor implement remedial measures and stop works was lifted by SW Project Manager.</p>	<p>Closed</p>
<p>4 Feb 25</p>	<p>Noro WTP</p>	<p>Mr. X has revoked the signed quarry agreement (dated 3 Feb 25) that day in writing (letter) stating some pending land issues at the WTP and submit payment claims to SW.</p>	<p>Reeves CCB</p>	<p>Reeves immediately removed 15 tons of excavator from [REDACTED] quarry, and met with another quarry site owners ([REDACTED] Clan) for a new agreement. Elders came together to discuss agreement for extraction of agreements from the new site</p>	<p>Reeves move to the new quarry site</p>	<p>Closed</p>

<p>██████</p> <p>08 Mar 25</p>	<p>Noro WTP Site</p>	<p>On 6 March 2025, Reeves received email from SW (██████) that Mr. X emailed SW COO regarding cutting down of Sago palm trees adjacent to the south laydown area at the Noro WTP. Note that on the 5th March, the CLO have had his monthly meetings with the tribal representatives (HB/ JT/ BB) which they discussed and agreed upon for extension of fence line.</p>	<p>Reeves</p>	<p>██████ then replied Nigel's email saying that the contractor hasn't cut down a single sago palm tree as claimed by Mr. Mr. X.</p>		<p>Closed</p>
<p>██████</p> <p>6 June 25</p>	<p>Noro WTP Site</p>	<p>On 6 June 2025, Mr. X, a claimant to Ziata land issued a grievance letter and confronted Reeves, SW and Forestry officers assessing a Gum tree he claimed was on his land, becoming agitated over not being asked for permission prior to assessing the tree. Ms. C and the Reeves WHS/CLO explained the assessment was requested by Solomon Water for safety reasons and assured him no cutting would occur. They confirmed compensation would be paid to the rightful owner once ownership is determined, noting the tree's ownership is disputed.</p>	<p>Reeves/ SW</p>	<p>This issue has been escalated to the Solomon Water Land Management Unit whom with the assistance of the MoFR and Ziata land owners identified the rightful owner of the tree as Mr. ██████.</p> <p>When Ms. C approached Mr. X, he refused to accept any further explanation or claim.</p>	<p>SW raised compensation payment for Gum Tree to ██████ on 12-06-25 and also met costs of labor for chainsaw hire.</p>	<p>Closed</p>

7.1. Gender Action Plan (GAP) Implementation

83. Basic monitoring of milestones, progress, and GRM complaints on gender related issues is ongoing with SW's communication team providing support remotely to the international social safeguards and gender consultant. The communication team has overall responsibility for gender issues within SW, assisted by the safeguards team.

84. Monitoring the GAP implementation has not been easy, as some baseline data is unavailable, and there are 27 indicators to be measured. Of these, ten are DMF indicators. The GAP monitoring reports are now being produced quarterly, but there have been delays for some quarters including the last reporting period because of various reasons:

- 1) The National Social Safeguards/Gender Specialist resigned in October 2023, and took a long time to be replaced, as the recruitment process failed when the selected candidate turned down the job offer. The post was finally filled in May 2025. This has made it difficult to comply with reporting schedules and to gather all the necessary data to fully report on progress, particularly in relation to Component 5.
- 2) The International Social Safeguards/Gender Specialist was on leave at crucial reporting times and there was no one else to complete the report in her absence, and her contract expired in April 2025 and took some time to renew.
- 3) It has not been possible to collect data for all targets and indicators without changes to SW data collection processes and a further survey. Recent GAP reports have had insufficient updated information on some targets and indicators, as this has proved difficult to collect without a dedicated Gender Specialist within SW's PMU. In the meantime, a visit by the International Gender Specialist is planned in Q3/4 (to work with the new safeguards/gender appointee), in order to review data collection and plan a survey.

85. At the start of the project SW was asked to produce bi-annual GAP Monitoring Reports, and all the first six reports followed this schedule and were submitted as agreed. At the end of 2023, this was changed by the ADB Gender Advisor, who asked for quarterly reporting, in line with usual ADB practice and as stipulated in the UWSSSP PAM (para.41). Reports submitted to date are:

1	July – Dec 2020	submitted
2	Jan – June 2021	submitted
3	July – Dec 2021	submitted
3	Jan – June 2022	submitted
4	Jan – June 2023	submitted
5	July – Dec 2023	no report submitted
6	Jan – March 2024	submitted

7	April – June 2024	submitted
8	July – Sept 2024	submitted (late due to staff on leave)
9	Oct – Dec 2024	no report submitted (no National Gender counterpart)
10	Jan – March 2025	In progress - based on review of last submission by ADB Gender Specialist. Q1-2 submission is delayed because of reorganisation of team collecting the data, and because the Environmental Safeguards Officer, and SW Community Liaison Officer have resigned (in June 2025).

86. There is ongoing monitoring to ensure all consultations include women participants and that resettlement agreements are providing compensation to both men and women. All trainings on WASH and hygiene awareness aimed to include at least 50 % women. Efforts are being made to retrieve information on earlier training numbers, and other details to put together a full cumulative list of activities. In particular, the team has tried to ensure that women in communities have equal opportunities and will be protected from any adverse social impacts related to SW activities.

87. In February 2024, SIWA approved a “*Gender Equality Strategy and Action Plan 2024: Strategy for Gender Equality and the Empowerment of Women 2024*” and has established a SIWA Gender Equality Committee together with a Gender Focal Point (GFP) from HR to oversee its implementation. In Q3 a meeting will be held with the gender team in PMU, and the GFP to discuss their respective roles and seek synergy and collaboration on shared aims and targets. Once this group is fully developed it could assist with improving SW’s gender systems, and the Project’s GAP implementation and monitoring.

8. SUMMARY AND CONCLUSIONS

88. During this reporting period the following outcomes have been achieved and challenges faced:

89. Environmental safeguards:

- An environmental audit of all project sites was undertaken in June 2025.
- One (1) joint audit with WB/ADB Specialists was conducted at the Honiara Network Water Supply Service reservoirs Trunk Mains and Reservoir Subprojects.
- Two (2) site visit were conducted at Noro WTPU Project in Q1 and Q2 2025.
- 15 site visits to UWSSSP subproject sites in Honiara which includes Trunk Mains, Reservoirs and Ranadi Goodwood were carried out by SW safeguards team for CESMP monitoring and compliance for this reporting period. 1 Night works inspection was done for Good wood subproject on 14-Apr-2025.

- UWSSSP Phase 2 PERs, Honiara Water Main Replacement and Honiara Water Pipeline Expansion PERs, have been reviewed and updated by SW's International and Local Environmental and Social Specialists before being submitted to WB for no objection in Q1, 2025.
- The Honiara Water Pipeline Expansion PER was also reviewed and updated by SW's International and Local Environmental and Social Specialists. Submission to WB for no objection is pending advice from SW project management team.
- Auki Water Network Expansion subproject proposal application has been received. The PA was finalised and submitted to MECDM on 13th June 2024. MECDM responded on February 2nd, 2025, that a PER is required. The development of PER is pending advice from SW Project Management team.
- The IEE/PER for the UWSSSP Phase 2 Honiara Water Main Replacement Projects was cleared by WB on 29th January 2025. The development consent application was submitted to MECDM on 5th March 2025. Public hearings were carried out between 26th-30th May (5 days) across various locations in Honiara. The approval from MECDM is expected in Q3 2025.
- SW's Environmental Officer has resigned in June 2025. Recruitment efforts is underway for replacement of National Environmental Officer. Meanwhile, the ESM Officer is currently acting on the role with support from the newly recruited National Social Safeguards Specialist, International Environmental Specialist and International Social Safeguards and Gender Specialist.
- PEP's does not have national Environmental and Social Safeguards Personnel's. The Environmental Officer and Environmental and Social Specialist have both resigned in 2024. As it stands, only one Safety Officer is looking after the Trunk Mains and Reservoir Subproject across Honiara. Another safety officer is looking after the Ranadi Goodwood Subproject. The safety officer for the Goodwood project was being replaced three times this year. All safeguards issues including reporting and correspondences are now managed by these two (2) safety officers and support by one (1) international Environmental Specialist who visits the country every once in a while.
- The lack of adequate resourcing from PEP has been an ongoing concern to Solomon Water especially on the repeated CESMP breaches such as poor implementation of TMPs, inadequate barriers and signages, road-instatement, erosion control, poor waste management practices, scaffolding issues, inadequate PPEs, working in confined spaces, weak monitoring and documentation especially on the incidents and so forth. which keeps recurring when conducting safeguards inspection visits. This has been raised numerous times during site meetings and ADB/WB Mission Review Meetings. The mechanisms in place such as stop work notices and close supervision has worked to some degree. However, there is no clear penalty clauses on CESMP breaches spelled out in the UWSSSP contracts.

90. **Social safeguards and Gender:**

- Areas of concern remain the same as in previous reports. There has been slow progress relating to land acquisition which is due to either design not yet finalised and likely changed but also the fact that negotiations with land title holder is a very long process. Much of the land needed for utilities is government owned, but there are tracts of privately held land or customary land, that are yet to be acquired, and where consultations and negotiations are on-going. Getting agreements with some parties has proved very time consuming, not to say frustrating. Also there have been difficulties in acquiring necessary land for pipelines and pump stations in Honiara, as private owners are reluctant to sell or lease for the official valuation rates. Many of the HNWW and provincial water supply LARPS are awaiting the signing of MOUs to finalise agreements with landowners.
- However, there have also been notable achievements: Noro LARP was finalized and submitted to ADB/WB for review and approval on 27th September 2024. The MOU with Ziata source landowners was reviewed by Attorney General and then signed on 29th September 2024 to allow the contractor (CCB Envico Pty Ltd) to commence work Ziata site. The LARP was updated to include the signed MOU and was resubmitted to WB on 23rd December 2024 for approval which was received on 9 March 2025. The conclusion of these long-running negotiations with Ziata landowners, has meant that work commenced in February 2025 and is now proceeding well.
- Completion of LARPs and submission/approval of development partners is still outstanding for Munda and Gizo provincial water supplies; and HNWW NRS and Ranadi Sewer Works sub-projects. These will be the priority for the next reporting period.
- The Kongulai project is on hold due to SW's termination of the contract with REAN due to breaches of the contract and lack of performance. The matter is now with the courts to decide on, with an appeal scheduled for October 2025.
- There have been staffing issues during the reporting period: while a national Social Safeguards/Gender consultant has at last been recruited, the UWSSS project's Environmental and Community Liaison officers both resigned in June, and replacements are currently being recruited. Also, there is no International Specialist manager for WASH to oversee the next phase of work for WASH in schools.
- Catchment Protection: Output 3 of Component 5 (Water Catchment Management and Payment for Ecological Services) has made significant progress over the last six months, despite historic disputes and conflicts among customary landowners in catchment areas, over land and natural resource management. In November 2023, Nakau, the contractor, produced

two reports⁵ to provide recommendations for PES site-specific studies at Kovi, Kohove and Kongulai water catchments. Four assessments were conducted and criteria produced for site selection. Nakau then presented the project concept design for development and implementation of a Community-Based Watershed PES, followed by further reflection meetings held with communities, leading to SW approval in May. By June 2024, Kohove landowners consented to initiate the project development activities, while the other sites are still mediating issues between themselves.

- From June 2024 to February 2025, Live & Learn Solomon Islands (LLSI) carried out participatory workshops and consultations with landowners in Kohove, resulting in the establishment of a project committee to represent the landowners, the design of the Kohove Land Use Plan document, and a signed MOU with SW.
- In March 2025, Nakau, Sustineo Consultancy, LLSI and SW team collaborated in design of a survey to assess the livelihood baseline scenario for the CBA-PES programme. The survey identified social impact indicators to be monitored throughout the project lifecycle, and to support discussion on the enabling factors that influence livelihoods. This will help guide community decision-making. The assessment also highlights the critical constraints and opportunities affecting livelihoods in Vatukola community and nearby inland villages, at Kakabona, Northwest Guadalcanal. 64 households were interviewed (33 females and 31 males).
- Findings of the survey covered:
 - Water supply and sanitation
 - Roads and transport
 - Community infrastructure
 - Electricity and housing materials
 - Women's inclusion in decisions and entrepreneurship
 - Education access
 - Small-scale agriculture and livestock
 - Forestry-based livelihoods
 - Informal economy and limited entrepreneurship
- Most households in Kohove catchment rely on informal and short-term income-generating activities, but with limited innovation or entrepreneurship because of local challenges and barriers. The assessment makes seven inter-linked recommendations (water, roads, shared facilities, productive skills, and financial inclusion), so that the project can address the principal livelihood bottlenecks, boost household incomes, and safeguard vital natural resources needed for protected catchment areas. The report also suggests three kinds

⁵ High Level Social Baseline Assessment and Stakeholder Analysis for the Water Catchment Management and PES Project" and "PES Options for management of Kovi, Kohove, Kongulai and Lungga water catchments" report

of indicators for (i) community infrastructure and governance, (ii) sustainable economic activities, and (iii) access to resources and enabling environment.

- A constructive dialogue has to be continued and financially and socially viable compensation packages determined for forthcoming land use zoning and subsequent restrictions. In the survey report, Kohove landowners and residents of Vatukola were described as “passionate and optimistic about the CBW-PES project”. There is a strong sense of motivation and enthusiasm, despite a few people expressing scepticism. The SW team and partners have remarked on a noticeable shift in mindset towards strengthening community governance, which is evident in the collaborative efforts of the chief and leaders from other sub-tribes working together to advance project activities.
- However, for while the implementation team for Catchment Protection have made good progress in engagement with Kohove stakeholders, difficulties remain in involving the other catchment areas of Kovi and kongulai, and in developing sustainable catchment management strategies for all sites.
- The project’s Environmental and Community Liaison officers resigned in June. There is no International Specialist manager for WASH. Recruitment is underway for the CLO and EO replacement. Solomon Water finally managed to recruit a National Social Safeguard’s Specialist in June 2025.

8.1. Recommendations for Implementation and Corrective Actions

- Honiara contractors need to significantly improve the implementation of their CESMPs with support from SW, ADB and WB. A key factor behind PEP’s persistent non-compliance is the absence of penalty clauses in contracts for CESMP breaches. To address this, SW is working closely with ADB/WB to ensure future contracts should include merit-based criteria with clear and possible enforceable provisions and penalty frameworks and supported by consistent monitoring and targeted capacity building programs. In the interim, strict timebound actions are recommended as corrective actions.
- The lack of qualified safeguard personnel across all Honiara subproject is a major concern. PEP need to urgently deploy safeguards staff to provide oversight on safeguards requirements over the three subprojects in Honiara.

The SW Safeguards team to share contractors’ monthly reports with ADB and WB on a regular basis to ensure transparency and enable closer monitoring of compliance with safeguards requirements. If no progress is observed, contractor performance should be reassessed and corrective actions taken. OHS concerns around confined space work remain critical and require stronger action. While the contractor has facilitated some trainings, additional measures such as a confined space permit system, air quality monitoring, proper PPE and trained rescue personnel must be in place during confined space works.

SW Safeguards and PMU staff to continue monitoring compliance and taking corrective action where gaps persist.

- Honiara contractors to improve the documentation of Grievances, near misses and incidences. Currently these are not being fully recorded. Contractors and their staff need more training to ensure the GRM is operating effectively and all complaints are being recorded and resolved. Once the revised GRM has been approved, extra training should take place to ensure communities and staff are confident in using the mechanism and have an understanding of the new SEAH processes.
- PEP's incident monitoring and reporting system remains a major gap. PMU continues to reinforce its importance to PEP and ensure all incidents are adequately reported in the next reporting period. Strengthening this system will enhance accountability, improve worker safety and support timely corrective and preventive actions.
- Solomon Water safeguards team will hold fortnightly meetings with the contractors' safeguards officers as of August to provide them with a timelier support and to discuss issues and resolves gaps.
- SW is also working on recruiting an additional Safety Officer to support the PMU in monitoring OHS issues and compliance. The officer is expected to be onboard by the end of Q1 2025.
- With the resignation of the Environment and Community Liaison Officer in June, replacements are expected early in Q3 but in the meantime, the Environment and Social Consultant, National Social Safeguard Consultant and the International Environmental and Social Safeguards Consultants are sharing their responsibilities. Improved coordination is needed, through more regular structured meetings, as part of an overall plan to improve safeguards communication and management systems in the coming months.
- There is an expressed need to have a gender officer to provide ongoing monitoring of the GAP who at the same time could provide support to the CLO. It is difficult to collect data on all 27 indicators with current staffing.
- Implementation of some of the corrective actions is ongoing as construction works are still underway at Panatina, East Kola, and Titige and Tasahe reservoir, Goodwood and Trunk Main sites. Unresolved/persistent CESMP issues will continue to be monitored with strict time bound actions going forward.
- Contractors and subcontractor staff compliance with PPE requirements needs to be improved. Non-compliance with PPE requirements was observed in all of the construction sites during routine weekly site visits. SW staff have monitored this problem consistently, but contractors have not been fully responsive to date. The proposed fortnightly meetings should improve matters.

- The resignation of the national Social Safeguards and Gender consultant left a hole in the team since October 2023. A replacement has now been recruited, with the return of the previous incumbent in May 2025. This has already improved our social monitoring and will allow for timelier social reporting which had been affected by lack of appropriate staff expertise over the last eighteen months.
- The difficult work in establishing and operating Community Advisory Committees for UWSSSP needs to continue particularly for HNWS. This should be a priority once the newly recruited CLO is established. The new CLO is expected to be on board by July 2025. It would also be easier if the CLO post could be re-located to the PMU rather than being part of the Communications Unit
- Actions discussed during the ADB/WB May Review Mission purposely to improve CESMP compliance include the need for the SW PMU to establish an online E&S Performance Monitoring Matrix and to update the GRM process. The online matrix will enable more systematic tracking of safeguard performance across contractors and sites, ensuring timely identification of gaps and corrective actions. Similarly, the updated GRM process will strengthen community feedback and resolution mechanisms, improving transparency and accountability. Both initiatives are forthcoming and will be rolled out in the coming months, before the next Review Mission, and will be shared with ADB/WB for review to enhance overall safeguards management and stakeholder engagement. The status of the other actions stated in the AM from May 2025 mission are noted in the table below.

Recommended Actions	Status
<ul style="list-style-type: none"> • The contractor should demonstrate the implementation of compliance requirements and legally agreed requirements in the upcoming quarter (Q3). 	<ul style="list-style-type: none"> • Solomon Water is conducting weekly monitoring of the sites and advise contractors on the spot on areas that require improvement. • A fortnightly meeting with the contractor will commence in August in the bid to enforce and also support contractor in complying with CESMP requirements.
<ul style="list-style-type: none"> • The contractor's monthly report will be shared with the ADB and World Bank for review. If no improvement is seen, the project will reassess the contractor's performance for further action. 	<ul style="list-style-type: none"> • SW reviewed the contractor's June safeguards monitoring report from the wastewater subproject. Comments requiring clarification on data were sent back to the contractor with no response received back from them. No reports for the Trunkmain and Reservoir projects were shared with the team. SW continued to send reminders to the contractors for their

	monthly report be shared on time for review.
<ul style="list-style-type: none"> In terms of GRM functionality, PMU is recommended to review the process to strengthen its record functionality. 	<ul style="list-style-type: none"> PMU is currently reviewing the process and should be circulating for comments in the next quarter.

- During implementation of the WASH Hygiene Promotion Project, the WASH team need to identify any existing Water User Groups or WASH Committees so progress can be tracked. This may be an easier task for the next phase of WinS where WASH groups are being established in eleven schools.
- The international Social Safeguards and Gender consultant needs to meet with relevant SW staff to review data which is collected at time of water connection to households. There is a need to include more household information, in order to monitor progress and social/gender impacts of the project, (such as: age, family size literacy level, disability, household income, and female headed households).
- The safeguards team should also continue to identify existing SW data or planned surveys by other departments, to provide baseline figures for monitoring of GAP indicators. The priorities to address delays in GAP reporting, are outlined in a work plan developed in June by a gender working group consisting of social safeguards staff, environmental staff, and catchment improvement staff, for implementation over the next reporting period.
- As part of an improved safeguards communications and management system, there is still a need to set up Dropbox system for storage of social and gender documents relating to targets and indicators. Ensure all training materials, consultation reports, presentations, and other materials are provided to ADB/WB.
- Develop long-term plan for three surveys (in 2025, 2026, and 2028) to help monitor the project impacts on women, men and children. A working group consisting of the Gender specialists, WASH specialist, and M&E specialist to discuss with SW staff, the design of the proposed 2025 survey, in order to provide data to monitor the GAP and project indicators.

APPENDICES

Appendix 1: Consultation for the Honiara Water Mains Rehabilitation Works – UWSSSP Phase 2

Community Consultations Summary January & Feb 2025 UWSSSP Phase 2 Honiara Water Supply Mains Replacement Project

Consultations conducted by:

- * [REDACTED] – Community Liaison Officer (Team Leader)
- * [REDACTED] – Environmental and Social Management Officer
- * [REDACTED] – Environmental Officer
- * [REDACTED] – Strategic Manager
- * 6 casual employees

Introduction

Solomon Water is currently implementing phase two of the Urban Water Supply and Sanitation Sector Project (UWSSSP), which aims to deliver sustainable, inclusive, and climate-resilient water supplies and improved sanitation in the Greater Honiara Area (GHA) and five other provincial centres in the Solomon Islands. The Honiara 10km pipeline rehabilitation project is scheduled for bidding in May 2025, employing a design-construct approach. To facilitate this process and exercise corporate social responsibility, Solomon Water has initiated consultations with communities residing along the existing water mains.

Stakeholder consultations were carried out from January 21st to February 4th, 2025 (10 days). The consultation area is provided in Appendix 1. Six casual employees were recruited to assist with the consultation efforts. Activities undertaken during consultations included distributing brochures, posting of notices, conducting one-on-one and group meetings, and interviewing residents in the area. This report outlines key updates, findings, and recommendations from the community consultations for the Honiara pipeline rehabilitation subproject.

Key highlights

- More than 10km of pipeline area was covered from Panatina Reservoir to Ngossi Chamber.
- Meaningful consultations were carried out over 10 days period using a mixture of approaches from organising group events to one-on-one or house to house meetings.

- A total of 17 communities have been consulted including two (2) schools at Lau Valley and Titinge School.
- 522 people were consulted especially residents or communities living along the pipeline access. Of these number, 185 (35%) were females and 337 (65%) males.
- Additional brochures distributed and communicated includes Customer Care and Billing Information and Solomon Water Care App information.

Community Feedback & Concerns

- In general, majority of households and communities welcome this new initiative to rehabilitate and expand water supply network given the ongoing issues with water supply disruptions caused by high turbidity at Kongulai and Kombito sources. Most people were really helpful and offered to assist SW contractors doing potholing to locate existing water mains pipeline.
- The team also received positive feedback from communities who applauds Solomon Water in taking this positive step by encouraging community participation and engagement. This was rarely being done in the past.
- Some communities in Gilbert Camp, Kombito Source and Lio Creek requested if new pipeline could be redesigned to run along the main road due to houses and properties being built on top of existing pipelines.
- Community at Lio Creek would like to create an alternate vehicle access road along the existing water supply mains network leading towards Lau Valley School.
- Market vendors at Kombito and borderline bus stops are concerned that rehabilitation works would impact their business and force them to temporarily close down resulting in loss of income and business opportunities.
- One resident at Vura 1 heights built her house on top of the existing water mains and was concrete slabbed. She requested if new pipeline extending from Nancy Valve to Vura 1 heights could deviate from her house.
- Communities near Panatina catchment, Mount Austin (upper borderline) and upper Titinge area including Titinge School requested if SW would consider expanding water supply network to their residential areas.
- Titinge School and certain community leaders requested if SW would also consider a special tariff rate for non-profit institutions such as community high schools and churches.
- Majority of people being interviewed would like to see cash water meters being re-instated at their houses.
- Other issues or concerns are captured in the Consultation Minutes circulated by SW's Community Liaison Officer (CLO).

Key challenges

Working people are usually not at home during weekdays. Therefore, information was passed on through their family members, neighbours or pinned up as brochures at their residential areas.

Misinformation. Some members of the public expressed negative sentiments toward Solomon Water and the UWSSSP project due to misinformation. For instance, certain individuals argued that water rates should be lower rather than increased and that Solomon Water is more concerned on profit-making than service delivery.

The consultation team addressed these misconceptions by explaining the importance of the UWSSSP in reducing non-revenue water (NRW) and ensuring a consistent water supply for Honiara's growing urban population. This approach helped improve understanding and foster greater acceptance of the project.

Recommendations and Next Steps

- A preliminary assessment by SW's community engagement team showed several potential resettlement issues due to building encroachments into the existing pipeline alignments especially in areas such as Lio Creek, Lau Valley, Gilbert Camp, Vura 1 heights, Vara Creek/Mataniko area.
- It is highly recommended to commence potholing as soon as possible to accurately locate the existing pipelines and potential risks that may arise during design and construction phase.
- Resolving land and encroachment issues may impact the delivery timeline of this project. Therefore, it is advisable to begin planning the necessary actions at the initial stages to prevent future delays.
- Management and relevant teams should continue working with local communities and all stakeholders to collectively address concerns and facilitate the smooth implementation of capital works projects.
- Follow-up consultations will be needed once the design is finalised prior to construction phase. This may include social impact assessments, inventory assessments, relocation agreements etc.

Conclusion

The community consultation for UWSSSP Phase 2 has provided valuable insights into the local water supply rehabilitation challenges. The feedback will be used to ensure that the project meets community needs while minimizing adverse social and environmental impacts. Continued engagement and transparent communication will remain key components of the project's success.

Key messages brochure

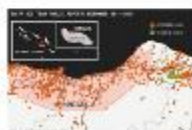
STAGES OF WORK

Stage One

- Surveying to accurately locate all features along the route



- UXO detection to clear any unexploded ordnances



- Potholing of manholes to be done every 50m



Stage Two

- Design update. No physical work will be done during this time and may be 2 - 3 months

Before stage three commences, the Solomon Water team will be having consultation with impacted communities and households.

Stage Three

- Mobilization by contractor
- Start trench works and laying of new water main

Machines to Be Used:

Most of the digging will be done by hand. However, small machines like excavators or backhoes might also be used in some cases.



Possible Dangers:

There will be open holes during the work, so barriers will be put up to keep people safe. Traffic control might also be needed to help vehicles move around safely while work is happening. The digging on roads and footpaths might cause delays and disruptions for cars and people walking.



Land Use:

The work will take place on public roads and sometimes on private property. Solomon Water will try to avoid working on private land as much as possible, but it might not always be avoidable.

Photos from community consultations

Locations: Panatina Valley, Lio Creek, Gilbert Camp, Aekafo, Lau Valley, Border Line, Kombito, Vura 1 Heights and East Kola community



Locations: GG Valley, Talise, West Kola, Titinge 1, Titinge 2, Vara Creek/Mataniko, Tasahe and Papaho community



Appendix 2: Environmental Audit Findings and Corrective Actions

Site Inspections, environmental audit findings and corrective actions/recommendations (Jan-June 2025)

No.	UWSSSP Site	Date Recorded	Description of Issue	Corrective Action/s	NCN/SI/NT C No.	Status
1	HNWS-Service Reservoir	25/02/24	No Registry of entry filled records for December 2024 and January 2025. Absence of Quality safety officer on site.	<ol style="list-style-type: none"> 1. Ensure Registry is updated 2. PEP to provide December 2024 and January 2025 Registry entry records. 3. Ensure Quality Safety checking and tagging system is in place on site. 4. Ensure MSDS is present at hazardous storage area. PEP need to provide Permits (BMP) and Development Consent (DC) for batching plants and Quarry site. 5. Waste Segregation need to be practiced on site, reminders to site supervisors to include inside weekly tool box meetings as an important agenda. 	SI0473	Closed
2	Sewer Works- Ranadi Goodwood	4/03/2025	Poor implementation of Traffic Management Plan (TMP), SMP and CESMP	<ol style="list-style-type: none"> 1. Install adequate barriers and safety tapes on site. 2. Ensure Traffic controller use handheld radios and stop go signs. 3. Install safety and traffic controller signage's plus 30-40km per hr speed limit on both sides of the construction site route. Reduced lane to be installed at both ends. 4. Re-instated portable toilet on site 5. Pedestrians should be not be allowed to access project site. 6. Check CESMP requirements prior to work commencement. 7. Rotate traffic personnel controllers from time to time to reduce fatigue and heat stress. 8. Implement dust suppression measures and dust monitoring. 9. Provide signed copy of JSA and work method statement for work commencement. 	SI0474	Closed

				10. Immediate seal off all open pits and work sites from public access.		
3	Sewer Works Ranadi- Goodwood	6/03/24	Limitation of traffic and safety Signage installation including traffic cones	1. Continue to address Non-conformance issues in previous site instruction (#0474) 2. Ensure adequate barricades provided to secure around open trench- high risk zone 3. Resumption of construction work depends on speed of resolving all safeguard issues in 1 & 2 are addressed.	S0475	Closed
4	HNSW- Service Reservoir (Tasahe)	20/03/2025	Workers working inside reservoir (Confined spaces) without appropriate JSA, safety method work plans in place.	All works inside the Reservoir to be cease immediately until safety work plans implemented; 1. Emergency Rescue Plan in place on site for workers working inside the tank. 2. Records of gas monitoring must be provided on site and submitted to Solomon water. 3. Suggested to provide additional air flows using fans to ensure adequate supply of fresh air inside the tank. 4. Copies of confined space working procedures and JSA submitted to Solomon Water. 5. Relevant dust PPE provided for workers assigned for the Job.	SI0476	Closed
5	Sewer Works- (Ranadi to Goodwood)	31/03/2025	(TMP) Traffic Management plan was not implemented on site. Excessive dust Visible of site. Dewatering of manhole not carried out. Inadequate to access manhole.	1. Ensure TMP in CESMP is fully implemented on site through tool box meetings. 2. Carry out Dust suppression frequency during hot sunny days 3. Dewater ground water inside the manhole (3, 5, 7). 4. Shift portable toilet to manhole 7 work site. 5. Undertaken remedial works as instructed by Solomon Water (SW) through Project Manager in previous inspections.	SI0477	Closed

6	HNWS-Honiara Water Reservoir storage Project (Tasahe)	1/04/25	Emergency Rescue Plan In place, Training records on site, Emergency protocol observed. No attendance training sheet documentation recorded.	<ol style="list-style-type: none"> 1. Provide attendance sheet of Emergency rescue training. 2. Provide adequate dust face mask (N95) and safety glasses for workers inside reservoir. 3. Provide records of log book indicating dust concentration and oxygen levels to show every 1 hour intervals. 4. Install tents over active live power boards to mitigate risks of electrocution during sudden rainfalls. 5. Rotation of workers inside reservoir at 2 hours intervals to minimise fatigue, heat stress, and health risks. 6. Grinding works inside reservoir may resume for duty when dust, oxygen monitoring and correct PPE in place Suggested, N95 and Safety glasses. 	SI0478	Closed
7	HNWS-Honiara Water Reservoir Project (Tasahe)	11/04/2025	Open trench covered, water blaster in place for dust suppression. No Atmospheric information readings record in confined space entry log book. No proper Housekeeping practices.	<ol style="list-style-type: none"> 1. Provide Atmospheric readings for PM_{2.5} and PM₁₀ in confined space entry log book. Log books needs to be amended to capture dust, O₂ readings. 2. N95 masks should not be re-used more than once for safety reasons, sufficient supply of N95 must be available at all times prior to entry into confined space. 3. Safety officer to provide calibration certificate for Multi gas Monitor 4. Implement housekeeping practices to manage and disposal of construction waste in designated landfill. 5. Relocate and securely store HDPE pipes from road-site to secure area. 	SI0479	Closed
8	HNWS-Service Reservoirs (Titinge Tank)	11/04/2025	Scaffolding safety work methods needs to be reviewed for update. No log book Registry of waste disposal activity provided.	<ol style="list-style-type: none"> 1. Scaffolding methodology to be revised to ensure bolts, joints are adequate fastened plus safety tagging system in place. 2. Open pit at rooftop needs to be properly barricaded and secured to prevent accident or near miss of workers accessing roof top. 	SI0480	Closed

				<p>3. Registry report of regular disposal of construction wastes at Ranadi dumpsite needs to be provided by Safety officer.</p> <p>4. Safety issues and all Emergency protocols to be applied in next phase including confined space Methodology.</p>		
9	HNWS-Service Reservoir	11/04/25	Overall site housekeeping is good, clean environment. Safety Officer needs to provide MSDS for Penetron and Coating materials – proper PPEs must be worn at all times by workers during use. Relevant SIG Ministries to provide permits and consents for concrete batching plant. GRM contact needs to be updated. Contractor to provide incident management, waste registry plus grievance registry.	<p>1. Maintained housekeeping consistency on site to avoid potential risks and Environment problems</p> <p>2. Safety officer to provide MSDS for Penetron and coating materials.</p> <p>3. Concrete pouring must be approved by the Permits and Consents letter from the Relevant SIG Ministry (MID).</p> <p>4. Incident reports, grievance complains (if any), and waste management registry need to be provide in by the contractor for monthly internal report to Solomon Water.</p>	SI0481	Closed
10	Sewer Works- Ranadi Goodwood (UR2-5-UR2-9)	14/04/2025	Absence of steel frame between drum. No traffic visible at URS 8 and 9. No dewatering at URS-09.	<p>1. Ensure to install steel frame drums as agreed in the previous inspections</p> <p>2. Install Lane Reduction signage before and after each manhole.</p> <p>3. Dewatering is required at UR2-09</p>	SI0482	Closed
11	Sewer Works- Ranadi Goodwood (UR2-10)	14/04/2025	Inadequate safety Lighting indicators on site for Night workers. Inadequate safety barriers in place around manholes at UR2- 8 and 9. Runoff access drainages to be clean for clear flow of water direction to	<p>1. Ensure sufficient safety construction lights to be provided and in place at designated areas.</p> <p>2. Clear cut of pipes from drainage UR2-8 and ensure drainage is clean from debris to allow clear flow of stormwater.</p> <p>3. Install additional barriers for manhole UR2-9 and traffic management plan for UR2-10 manhole.</p>	SI0483	Closed

			designated main drains. No written submission of incident reports forwarded to SW regarding incident verbally reported. Manholes to be dewatered. Provide dust protection N95 masks for workers	4. Ensure to pump out stormwater in every manhole prior to backfilling. 5. Workers to be issued with safety glasses and N95 mask to prevent dust emission. Prior to that, Dust suppression needs to be implemented along haulage road where main works carried out.		
12	Ranadi Rd to Goodwood out fall Sewer Work. (Ranadi Goodwood)	12/05/2025	Construction work continue while stop work notice is still in place. Previous safeguard Non-compliance issues inspected by SW were not fully addressed by PEP.	1. While Stop Work Notice is in place, PEP should not be carrying out any construction work. 2. Contractors failed to action CESMP, TMP and SMP on site. 3. No proper barriers to secure risk utilities on site 4. Absence of TMP control personnel 5. Road construction deteriorating need to be rectified or maintain to its normal conditions. 6. Sheet piles not stored properly 7. Ensure all safety discussed issues addressed before the stop work notice be uplifted.	SI0484	Closed
13	HNWS Service Reservoir (Tasahe Reservoir)	4/06/2025	Site has improved from previous inspections. Base safety Railings removed, pre-pouring within reservoir, minor issues.	1. Provide calibration certificate of oxygen multimeter by safety manager. 2. General reminders on housekeeping matters on construction site to be continuous. 3. Disposal of construction waste to designated landfill. 4. Provide additional safety barriers for open pit at the base of the reservoir. 5. Ensure safety harness is adequately used.	SI0485	Closed

14	Ranadi Goodwood sewer works	5/06/2025	All elements of TMP is not fully carried out as required in the CESMP. Stormwater access controlled to be improved. Workers not wearing full PPEs on site. Relocate portable toilets next to UR2-4 to UR2-6. Night works must provide updated TMP. Be reminded to record log book registry of grievance claims and incident arise.	<ol style="list-style-type: none"> 1. Ensure to provide toolbox meeting with workers on topics of TMP procedures to follow 2. Ensure stormwater drainage is cleaned for clear pathway route flow of water to designated main drains. 3. Ensure the road surface disturbed is re-instated accordingly to specifications. 4. Ensure all GRM received have to be recorded including incidents and near miss. 5. Ensure portable toilets positioned at UR2-4 to be moved to UR2-6 for closer distance for workers to use. 	SI0486	Open – drainage clearance and road reinstatement yet to be completed
15	Trunk Mains (Burns Creek section)	5/06/2025	Workers didn't not have adequate PPEs when working in confined spaces. TMP is poorly practiced.	<ol style="list-style-type: none"> 1. Workers assigned to work in confined space should provide with right PPEs i.e. (Hard hats, Hard gloves, safety glasses) 2. Ensure Confined space Methodology is strictly adhered to especially, gas monitoring and structural stability of the chamber cover is considered. 3. Install additional barriers, improve safety nets, and replace timber barriers with partially filled drums. 4. Ensure to address all TMP safety actions during construction works. 	SI0487	Closed

16	Reservoir (Panatina)	5/06/25	Absence of waste disposal log book Registry. Absence of MSDS requirements. Update of PEP CESMP Organizational Structure. Absence of permits and licences for materials used.	1. Ensure to provide waste disposal log book activity includes date, types of wastes dispose, weight and locations of disposal. 2. Provide MSDS documents of Penetron coating to be provided to SW. 3. Provide Calibration certificate for gas and dust multimeter testing 4. Provide material source permits and licences.	SI0489	Open – MSDS for Penetron and Calibration Certificate yet to be provided
17	Reservoir Project (Panatina)	5/06/2025	Absence of Emergency Evacuation tools on top pf Reservoir roof. Dust and Oxygen monitoring to continue.	1. Install Emergency Evacuation pulley and board on tripod prior to commencing further works within reservoir. 2. Workers mandatory to wear N95 face mask when working within reservoir. 3. Ensure dust and air monitoring is happening on a frequent basis during works on progress within reservoir. 4. Submit confined space methodology for Panatina Reservoir for review and approval prior to further works within reservoir.	SI0490	Closed

18	Sewer Work Project Ranadi to Goodwood outfall	30/06/2025	Stop work Notice in placed prior to Non-compliance on Environmental, social, Health and Safety issues inspected on site.	<ol style="list-style-type: none"> 1. Portable toilet needs water, toilet paper etc. 2. Construction waste to be disposal at Ranadi landfill for public health and safety. 3. Traffic controller needs rotation, chair, PPEs, drinking water, umbrella to minimise fatigue and downtime during working hours. Provide Tool Box meetings on TMP topics for workers. 4. Manhole UR2-6 needs to be dewatered as soon as Genset is fixed. 5. Install additional nets barriers for manhole UR6-4 to prevent falling. 6. Road sections at Manhole UR6-1 to UR 6-4 (Solbrew road) needs backfilling to prevent damage to exposed manhole lids. 7. Stormwater Access controlled need to be improved. Drainage to be cleared with removal of debris for clear flow of water access to main drains. 8. Site Manager to provide timeline for completion of works, permits, road reinstatement. 9. Install a GRM box to be visible on site and ensure with notice information so that communities nearby or workers can understand the purpose of the box in place. 10. Removal of Rubbish prior to backfilling man hole to Ranadi landfill. 	SI0491	Closed
----	--	------------	--	--	--------	--------

Appendix 3: Selected Site Inspection Reports – UWSSSP Subprojects

Trunk Mains CESMP Inspection 23-Feb-2025



PO BOX 1407 | Honiara | p: 44700 | e: service@solomonwater.com.sb
Solomon Islands Water Authority Trading as Solomon Water

Land Management Unit Non-conformance Report Environmental and Social Safeguards Section

1. GENERAL INFORMATION

Project No.	SW-0192019	Section:	Burns creek – Kukum Section
Inspection Date:	Tuesday 25 th February 2025		
Reporting Date:	Monday 3 rd March 2025		
Attendees:	[REDACTED]		
Purpose:	This report highlights the non-conformances noted during site inspection visit and subsequent corrective actions to be rectified by the contractor.		

2. SITE OBSERVATIONS

Site 1. Burnscreek Site (West End) 25/02/25; 3:00 pm



1. Missing barricades and appropriate speed limits signages.



2. Broken water filled barriers consistently used in project sites.



3. Workers exposed to incoming traffic with inadequate barriers.

Site 2. Panatina road, SINIS complex up to Panatina Tank, 25/02/25; 3:30pm



4. Broken water filled barriers knocked over by wind and rain.
5. No sediment control in place.



6. Open pit increases likelihood of sediment buildup in pipes, added risk to public safety and moving vehicles.



7. No reinstatement work done to date.



P.O. Box 1407 | Honiara | p: 44700 | e: service@solomonwater.com.sb
Solomon Islands Water Authority Trading as Solomon Water

Land Management Unit
Environmental and Social Safeguards Section

Non-conformance Report

Site 3. Kukum section (next to SDA Church) 26/02/25; 3:00 pm



8. Inappropriate use of barriers, spacing between drums is too wide.



9. Lack proper sediment control/ barriers to minimize soil erosion.



P.O. BOX 1407 | Honiara | p: 44700 | e: service@solomonwater.com.sb
Solomon Islands Water Authority Trading as Solomon Water

Land Management Unit
Environmental and Social Safeguards Section

Non-conformance Report

Site 4. Burns creek Site (East End) 26/02/25; 3:00 pm



10. Improper pedestrian walkway, no cones and tapes.



11. Broken water filled barriers continue to be used in eastern section at Burns creek site.

3. KEY FINDINGS

A. Poor implementation of Traffic Management Plan (TMP)

- The contractor continues to use broken water filled barriers as barricade for work sites despite being advised to discontinue using defect materials. The Burns creek section is a high-risk zone because it is situated along the highway where vehicles are moving at high speed. In the event of an accident or collision, empty water filled barriers would have offered little protection to construction workers.

The CESMP states, "If the effectiveness of safety jackets or other protective equipment falls outside accepted standards; they are to be cleaned or replaced", J0271-CESMP-001, pp 153.

"Barricade the subject area with cones, water filled barriers and special barricading net where required. Cones will be 900mm high with 2 x reflector tapes and will be placed at 1.5m intervals in the vicinity of the subject area as shown in the diagram above", J0271-CESMP-001, pp. 157.

The lack of strong commitment from the contractor to guarantee health and safety of workers or subcontractors on site is becoming a major concern.

- Pedestrian walkways were not clearly demarcated with cones and signages that safeguard the general public especially school children from busy traffic. Traffic signs, safety zones, speed limit lines and delineation devices were not fully observed. J0271-CESMP-001, pp. 153 states "appropriate Signage, Cones and bypass route. Manual guiding of traffic with "GO" & "STOP" signs" to be used.
- Asphalt seal for Panatina road and from East kola to Kukum road has not been re-instated for several months now. This contributes to the road degradation of Honiara and worsen environmental impacts through erosion and sediment runoffs which contradicts what was outlined in the CESMP. For example, according to J0271-CESMP-001: Annex 8 Traffic Management Plan it states, "effort



P.O. BOX 1407 | Honiara | p: 44700 | e: service@solomonwater.com.sb
Solomon Islands Water Authority Trading as Solomon Water

Land Management Unit
Environmental and Social Safeguards Section

Non-conformance Report

will be made to complete the permanent reinstatement on the same day. However, if permanent reinstatement cannot be completed on the same day, the same procedure shall be followed to complete the permanent reinstatement on the next available day. If the following day is a rest day, any temporary reinstatements completed must be approved by Client", CESMP pp. 154.

"All asphalt sealed roads will be reinstated with asphalt seal", CESMP pp. 59.

The prolonged delay on road reinstatement is disappointing for the most part and reflects poorly on contractor's performance and ability to deliver quality outputs in the Trunk Main project.

B. Evidence of soil erosion and sediment loss from construction site

- Soil excavations were not adequately managed as observed by lack of appropriate barriers and retention walls to contain sediment run off into nearby stream or public spaces. J0271-CESMP-001 states that:

"PEP (contractor) will ensure that the following measures will be taken to control soil erosion and control sedimentation as and where required: • Retain groundcover where possible, • Silt fence, • Silt traps, • Small interceptor dikes, • Slop drains and • Bale barriers. Silt fences are useful for containing stockpiles of earth or areas of disturbed soil and clay on site. A silt fence is a temporary barrier used to intercept dirty water and retain sediment. The best type is woven 100-micron geotextile cloth. Bunds will be used to prevent stormwater from flowing into the temporary stockpile and open trenches. A temporary drain will be installed on the opposite side of the bund. A silt fence will be installed downstream of the temporary bund and temporary drain", CESMP, pp. 24.

C. Wastewater and sanitation issues

- The contractor has failed to provide portable toilet facilities for workers on-site, leading to significant health, environmental, and regulatory concerns. Lack of sanitation facilities is not only a deprivation of basic human right but also it is against good Occupational Health and Safety (OHS) practices. Further, unsanitary practices such as open defecation increase the risk of disease transmission and pollution of streams and surrounding environment, negatively impacting the social wellbeing of communities.

In the J0271-CESMP-001, the contractor states that:

"5.1.1 Wastewater and Sanitation

During construction, portable site toilets or temporary toilets with septic tanks will be available onsite for workers. These will be maintained by authorized personnel from the company who will be supplying the portable toilets, under the supervision of the Site Manager.

The septic tanks will be emptied out on regular intervals or on an as required basis by registered sewer discharge professionals and to be discharged as per Solomon Islands local regulations. The current septage disposal site operated by Honiara City Council at Ranadi Landfill will be used until advised otherwise", CESMP, pp. 21.

The contractor's authorized personnel appear to overlook the importance providing basic sanitation facility for workers.



PO BOX 1407 | Honiara | p: 44700 | e: service@solomonwater.com.sb
Solomon Islands Water Authority Trading as Solomon Water

Land Management Unit
Environmental and Social Safeguards Section

Non-conformance Report

4. CORRECTIVE ACTIONS

What?	When?	Who?
<ul style="list-style-type: none"> Have a daily checklist in place to perform rapid risk assessment prior to mobilization of work. 	Prior to work, daily	Site supervisors, POs, safeguards team
<ul style="list-style-type: none"> Discontinue use of broken water filled barriers Use empty drums as temporary substitutes while fast tracking the procurement of new water filled barriers as per J0268-CESMP-001: Annex 7: Safety Quality and Environmental Responsibilities, pp. 144. Construction works MUST be in accordance with Traffic Management Plan (TMP) to safeguard workers, public and communities from potential risks/ accidents. 	With immediate effect	Contractor
<ul style="list-style-type: none"> Spray-paint all broken water filled barriers to be marked with an "X". The contractor is not allowed to use broken barriers in its work sites. 	With immediate effect	SW Project Manager, POs and contractor.
<ul style="list-style-type: none"> Asphalt reinstatement work to be undertaken in the same week upon completion of works. 	30 th March 2025	Contractor
<ul style="list-style-type: none"> Portable toilets for workers MUST be provided at all active work sites and then safely removed once work is completed. Open defecation is not an option. 	With immediate effect	Contractor, All supervisors, PM, POs
<ul style="list-style-type: none"> Stricter supervision and controls to be in place to prevent sediment loss. 	With immediate effect	Contractor, All supervisors, PM, POs
<ul style="list-style-type: none"> CESMP to be updated to reflect changes in key personnel and other information. 		Contractor ESM Officer

5. CONCLUSION

- While most of the contractual work at Burns creek site may have been completed, this report continues to highlight the non-compliance issues arising from CESMP breaches during implementation of the Trunk Main project. These breaches are in relation to health and safety, environmental impact, traffic management and solid waste management. It is important that the contractor do what is says it will do in the CESMP. This must be consistently emphasized across all site works.

Ranadi Good Wood Site Inspection 4-Mar-2025



P.O. BOX 1407 | Honiara | p: 44700 | e: service@solomonwater.com.sb
Solomon Islands Water Authority Trading as Solomon Water

Land Management Unit

Environmental and Social Safeguards Section

Non-conformance Report

1. GENERAL INFORMATION

Project No.	SW0682021	Section:	Ranadi Good Wood – Section
Inspection Date/ Time:	Tuesday 4 th March 2025; 3:00 pm		
Reporting Date:	Tuesday 4 th March 2025		
Attendees:	[REDACTED]		
Purpose:	Follow-up on CESMP non-compliance at Randi Goodwood site.		

2. SITE OBSERVATIONS: 4th March 2025; 3:00 pm



No safety barriers/ barricades in place to safeguard general public and vehicle from deep trench.



Traffic controllers do not have handheld radios and "stop & go signs" to safely manage traffic.



Children exclusively accessing work site, no control measures in place.



Site supervisor not wearing any PPEs, inadequate barriers on site.



P.O. BOX 4071 Honiara | p: 44700 | e: service@solomonwater.com.sb
Solomon Islands Water Authority Trading as Solomon Water

Land Management Unit
Environmental and Social Safeguards Section

Non-conformance Report



No pedestrian walkways including cones and tapes for public access.



Poor traffic management leads to traffic congestions and increase dust concentrations on site. There is also no portable toilet available for workers.

3. KEY FINDINGS

- (a) Poor implementation of Traffic Management Plan (TMP)
- (b) Breach of CESMP including health & safety requirements
- (c) Sanitation issues due to lack of portable toilet facilities provided for workers

4. CORRECTIVE ACTIONS

What?	When?	Who?
<ul style="list-style-type: none"> ▪ Install safety barriers, cones and tapes. ▪ Close off all possible access to work site. ▪ Use appropriate traffic signages. ▪ Provide Pedestrian walkways. ▪ Place reflectors tapes on barriers. ▪ Traffic controllers to use handheld radios & "STOP & GO" signs ▪ Provide portable toilet for workers. ▪ All workers to wear appropriate PPEs. 	With immediate effect	Contractor



P.O. BOX 1407 | Honiara | p: 44700 | e: service@solomonwater.com.sb
Solomon Islands Water Authority Trading as Solomon Water

Land Management Unit

Environmental and Social Safeguards Section

Non-conformance Report

5. CONCLUSION/ RECOMMENDATIONS

The safeguards team has determined that the contractor for the Ranadi Good Wood project has breached the requirements of the CESMP. As a result, we recommend that the contractor promptly address all issues outlined in the non-conformance report and site instructions within 24–48 hours. Failure to comply within this timeframe may result in the issuance of a stop-work notice.



Ranadi Good Wood Follow-up Site Inspection 6-Mar-2025



P.O. BOX 1407 | Honiara | p: 44700 | e: service@solomonwater.com.sb
Solomon Islands Water Authority Trading as Solomon Water

Land Management Unit
Environmental and Social Safeguards Section

Non-conformance Report

GENERAL INFORMATION			
Project No.	SW0682021	Section:	Ranadi Good Wood – Section
Inspection Date/ Time:	Thursday 6 th March 2025; 2:50 pm		
Reporting Date:	Thursday 6 th March 2025		
Attendees:	[REDACTED]		
Purpose:	Follow-up audit inspection at Randi Goodwood site to check if contractor addresses corrective actions outlined in previous Non-conformance report.		
1. SITE OBSERVATIONS: 6 th March 2025; 2:30 pm			
 <p>Potential structural instability and safety concern. The road access on the above section is rendered unsafe due to erosion of soil from heavy rainfall – evident from barrier collapsing over the edge of the pit.</p>		 <p>Barricades not extended to this section, still no pedestrian signages and cones in place to guide pedestrians but more importantly restrict access to active work sites.</p>	



P.O. BOX 3407 | Honiara | p: 44700 | e: service@solomonwater.com.sb
Solomon Islands Water Authority Trading as Solomon Water

Land Management Unit
Environmental and Social Safeguards Section

Non-conformance Report



Absence of traffic control personnel on site resulting in congestions.



Still no portable toilets provided for workers on site. Signages such as "work over" can be confusing for public.

2. KEY FINDINGS

Issues observed on site:

- (a) Traffic Management Plan (TMP)
- (b) Health & safety compliance
- (c) Sanitation and waste management compliance




P.O. BOX 1407 | Honiara | p: 44700 | e: service@solomonwater.com.sb
Solomon Islands Water Authority Trading as Solomon Water

Land Management Unit
Environmental and Social Safeguards Section

Non-conformance Report

3. CORRECTIVE ACTIONS

What?	When?	Who?
<ul style="list-style-type: none"> Address structural stability near open pit. Install proper water filled barriers/ metal fence – if drums are used, ensure they are filled with water or sand. Use appropriate traffic signages. For example, reduced Lane on both ends as below;  <ul style="list-style-type: none"> Provide Pedestrian walkways, cones and nets. Traffic controllers with handheld radio must be at site during working hours. In the event of a rain, traffic controllers must be provided with an umbrella/rain coat. The traffic yesterday was heavily congested because no one is managing the site. Provide portable toilet MUST be available for workers. We observed 4 portable toilets sitting idly at PEP's Ranadi laydown area. One of those needs to be transferred to site. 	With immediate effect	Contractor

4. CONCLUSION/ RECOMMENDATIONS

The contractor has made some improvements from the previous day. However, some issues such as portable toilet, barriers, signages and traffic management is yet to be adequately resolved. We recommend that the PEP continues to address all issues outlined in this non-conformance report prior to further works. This will guarantee safe working conditions and mitigate potential hazards.

Panatina Reservoir Site Inspection 25-Feb-2025



PO BOX 1407 | Honiara | p: 44700 | e: service@solomonwater.com.sb
Solomon Islands Water Authority Trading as Solomon Water

Land Management Unit

Site

Inspection Report

Environmental and Social Safeguards

SW0662021-1/25

1. GENERAL INFORMATION

Project No.	SW0662021	Section:	Panatina Reservoir
Inspection Date:	Tuesday 25 th February 2025		
Reporting Date:	Monday 17 th March 2025		
Attendee(s):	[REDACTED]		
Purpose:	The purpose of the visit was to follow-up on the status of CESMP implementations at Panatina Reservoir Site and compliances of SSS (subcontractor) documentations for Batching Plant at Ranadi.		

2. SITE OBSERVATIONS

Panatina Reservoir Site - 25/02/25; 3:25 pm



Nails with loose ends persistently being used in scaffolding joints posing serious OHS concerns despite of earlier advise by ADB/WB/SW team on 11.12.24 to use appropriate nuts and bolts.



Poor practice of waste segregation. All three drums used to store inorganic wastes.



P.O. BOX 1407 | Honiara | p: 44700 | e: service@solomonwater.com.sb
Solomon Islands Water Authority Trading as Solomon Water

Land Management Unit Inspection Report

Environmental and Social Safeguards

Site

SW0662021-1/25



For scaffolding, (1) no adjustments made to accommodate head clearance height, (2) Steel pipes protruding and not covered/capped, (3) absence of safety guard rails as an extra layer of protection for workers/ staff/ visitors and there no evidence of safety tagging systems in place.

No	Description	Frequency	Yes	No	Remarks
1	Is the work area clearly demarcated prior to work?	Daily	✓		
2	Is the proper PPE (hard hat, safety glasses, etc.) worn by all workers at all times?	Daily	✓		
3	Are workers trained in the location of work and the use of PPE?	Daily	✓		
4	Is the safety induction and JSA/TSP provided to all workers?	Daily	✓		
5	Is an EOP provided to workers at all times?	Daily	✓		
6	Are workers trained in the location of work and the use of PPE?	Daily	✓		
7	Is the EOP provided to workers at all times?	Daily	✓		
8	Is the EOP provided to workers at all times?	Daily	✓		
9	Is the EOP provided to workers at all times?	Daily	✓		
10	Is the EOP provided to workers at all times?	Daily	✓		
11	Is the EOP provided to workers at all times?	Daily	✓		
12	Is the EOP provided to workers at all times?	Daily	✓		
13	Is the EOP provided to workers at all times?	Daily	✓		
14	Is the EOP provided to workers at all times?	Daily	✓		
15	Is the EOP provided to workers at all times?	Daily	✓		

Weekly Site Audit Report last updated on 12/02/25.
No grievance or incidents recorded to date.



P.O. BOX 1407 | Honiara | p: 44700 | e: service@solomonwater.com.sb
Solomon Islands Water Authority Trading as Solomon Water

Land Management Unit

Site

Inspection Report

Environmental and Social Safeguards

SW0662021-1/25

3. SUMMARY OF OBSERVATIONS

- No specific JSA for each stage of work e.g. work in height, confined spaces etc.
- Missing documents: GRM Register, Waste Disposal Register & Incident Register.
- Missing records for December and January.
- No records of permits & license for batching plants.
- Poor waste management practices at segregation site.
- Corrective actions raised in previous site visit by ADB/WB/SW team haven't been addressed to date implying that PEP and SSS (subcontractor) neither acknowledges nor committed in to addressing any OHS issues. This has been evident by lack of communications.

4. CORRECTIVE ACTIONS

- PEP needs to provide a formal response to acknowledge they have received this report and are working to address on going issues identified in this report and previous report dated in 11 December 2024.
- The Subcontractor (SSS) through PEP will need to provide copies of the following documents by March 31, 2025;
 - (a) **Business License** from Guadalcanal Province
 - (b) **Building Material Permits** from Ministry of Mines, Energy & Rural Electrification
 - (c) **Development Consent** from the Environment Conservation Division (ECD), Ministry of Environment, Climate Change, Disaster Management and Meteorology (MECDM)
- PEP to provide evidence of refresher trainings for workers when moved from one site to another.
- PEP to provide Names of fire wardens and first aiders need to be provided and updated.
- PEP to provide scanned copies of the following documents: GRM Register, Waste Disposal Register & Incident Register.

Trunk Mains Site Inspection 13-May-2025



PO BOX 1407 | Honiara | p: 44700 | e: service@solomonwater.com.sb
Solomon Islands Water Authority Trading as Solomon Water

LMU/PMU

Environmental and Social Safeguards

Non-Conformance Report

No. 2/25 TM

1. GENERAL INFORMATION

Project No.	SW-0192019	Section:	Burns Creek – White River
Inspection Date:	Friday 9 th May 2025		
Reporting Date:	Tuesday 13 th May 2025		
Attendees:			
Purpose:	To formally identify CESMP breaches and mandate the rectification of environmental, social, and health & safety non-compliances by the contractor, PEP.		

2. SITE OBSERVATIONS

Site 1. White River (Namoruka to Kongulai); 10:00 am



[1]



[2]



[3]

• Observations:

- [1]. Open trench near WR/Kongulai stream crossing covered in vegetation, no safety signages in place - posing risks to communities including vehicles.
- [2]. No barriers or safety signages in place for excavated pit in [2] – high risk for injury especially during the night.
- [3]. Empty Water filled barriers knocked over, poor excavation & sediment control techniques contributing to road degradation. Seems there is no QA/QC system in place to monitor quality of work.

• Corrective actions:

- [1]. Clear vegetation, and install safety barriers/ signages until pit is covered.
- [2]. As in 1 above, barricade site and install safety signages. Such work needs to be prioritized and swiftly closed off to minimize risks posed to community health & safety.
- [3]. PEP H& S officer to inspect site on daily basis to rectify any safety issues.
- [4]. Discontinue usage of broken water filled barriers, utilize only fully functional water-filled barriers for optimal road safety.
- [5]. Excavated materials should be properly contained to avoid soil erosion and further road degradation. PEP is responsible to reinstate road conditions impacted by excavations and construction work.

LMU/PMU
Environmental and Social Safeguards

Non-Conformance Report
No. 2/25 TM



[4] – W/River to Kongulai section

• **Observations:**

- [4]. The road in this section is caving in and looks as if it will collapse anytime soon. Broken water filled barriers are being used and there are no safety caps placed on steel rods protruding from the pit. Any person, children or vehicle who accidentally falls into the pit will most likely sustain serious injury or even death. Also, there are no safety signages in place for this site.

• **Corrective actions:**

- [6]. Construction work in this area needs to be prioritized and closed off swiftly. Replace broken water filled barriers with solid barricades which cannot be easily knocked over.
- [7]. Safety signages play an important role in promoting public safety, preventing accidents and ensuring compliance with regulatory and CESMP requirements. Just because this section is isolated from heavily congested areas, it does not mean half measures are to be applied.

Site 2. White River School; 10:30 am



[5] – W/River School



[6] – [REDACTED] house, W/River



[7] – W/River School

• **Observations:**

- [5]. Portable toilet located close to White River School fence was overturned creating public health risks for both students and general public who access the site daily.
- [6]. Pipe burst in excavated site causing buildup of water level in the pit area. There is a risk of flooding to nearby households during heavy rainfalls. Also, continuous water storage may likely impact stability of road. Stagnant pools can cause unpleasant odor and could be a breeding ground for mosquitos in the area creating public health concerns.
- [7]. Deteriorated road conditions, blockage of drainage from excavation works and no proper laydown area for HDPE pipes.



P.O. BOX 1407 | Honiara | P: 44730 | E: service@solomonwater.com.sb
Solomon Islands Water Authority Trading as Solomon Water

LMU/PMU
Environmental and Social Safeguards

Non-Conformance Report
No. 2/25 TM

• **Corrective actions:**

- [8]. Immediately reposition and secure the overturned portable toilet to prevent further sanitary risks. Ensure it is thoroughly cleaned, disinfected, and relocated to a more stable, less disruptive location away from the school fence. Install anchoring or stabilization measures to prevent future tipping. Increase inspection frequency to monitor sanitation conditions and prevent recurrence.
- [9]. Repair pipe burst, dewatering pit after heavy rainfalls, backfill excavation site if work is complete or else prioritize construction work in this area to close off pit area. Site manager to conduct daily site inspection and monitoring in this area.
- [10]. Reinstate access roads at White River School. Clear drainage pathways to prevent water logging and further road damage. All unused HDPE pipes/ construction materials are to be properly stored in designated laydown areas unless it is to be used within the same week.



W/River School Road [Before Photo –21 March 2025]



W/ River School Road [After Photo – 9 May 2025]



PO BOX 1407 | Honiara | p: 44700 | e: service@solomonwater.com.sb
Solomon Islands Water Authority Trading as Solomon Water

LMU/PMU
Environmental and Social Safeguards

Non-Conformance Report
No. 2/25 TM

Site 3. Bulkshop Rove to Childrens Park; 11:00 am



[8] – Rove Bulk Shop area

[9] – Rove Children's Park area

• **Observations:**

- [8]. Poor sediment control measures. Soil excavations most likely contribute to blockage of drainage at Rove Bulk Shop area resulting in waterlogging of nearby road and tea shop area. This issue was being raised as a grievance by Bulk Shop management.
- [9]. Heaps of household wastes observed in sealed construction site at Children's Park area. Waste concrete block observed at creek crossing area.

LMU/PMU

Environmental and Social Safeguards

Non-Conformance Report

No. 2/25 TM

• **Corrective actions:**

- [11]. PEP to ensure that soil excavation is properly contained and safely disposed of, and that drainage around the Bulk Shop area remains clear and unobstructed as per CESMP. Also, liaise with MID & CCECC to determine way forward in resolving this issue.
- [12]. PEP to remove all wastes generated at construction site including waste concrete block at children's park.

Site 4. Burns Creek to Panatina; 1:00 pm



[10] – Burns Creek



[11] – Tanakake Road, next to SINIS Complex

• **Observations:**

- [10]. Inadequate barriers and lack of proper signages along highway.
- [11]. Excavated pit at Tanakake road & KGV stadium remains exposed for prolonged period as road not re-instated.

• **Corrective actions:**

- [13]. Install additional barriers and signages at Burns creek section. Discontinue use of broken water filled barriers. Steel rods protruding from excavated pit need to be capped.
- [14]. Construction work and pressure testing Tanakake to Burns Creek section needs to be prioritized and closed off quickly. The longer it is delayed, the higher the risks it poses to community health & safety.

Site 5: Kukum to East Kola; 2:00 pm



[15] – Florence Young School



[16] – East Kola, next to [REDACTED] house

LMU/PMU

Environmental and Social Safeguards

Non-Conformance Report

No. 2/25 TM



[17] – Florence Young School 7th February 2024

• **Observations:**

[13]. This section at Florence Young School is being left open for too long. Refer to [14] for photograph taken on 7th February 2024 (15 Months)

[14]. Broken water filled barriers used, no reduced lane signage and sediment control noted at East Kola Section.

• **Corrective actions:**

[15]. Section at Florence Young School needs to be finalized and completed soon. The same applies to East Kola area next to Moya's house. Proper signages, barriers and TMP to remain intact and effectively implemented.



[21] – Florence Young School to East Kola Road

• **Observations:**

[15]. Road section from Kukum to East Kola Section not being reinstated since 2024. Road conditions further deteriorated ever since.

• **Corrective actions:**

[16]. PEP to prioritize completion of work from Kukum to East Kola section without compromising quality. Road reinstatement to immediately follow suit.



P.O. BOX 1407 | Honiara | p: 44700 | e: service@solomonwater.com.sb
Solomon Islands Water Authority Trading as Solomon Water

LMU/PMU

Environmental and Social Safeguards

Non-Conformance Report

No. 2/25 TM

3. CONCLUSION & RECOMMENDATIONS

- PEP to proactively address each site-specific corrective actions and provide a corrective action report by 23/05/2025.
- The safeguards issues highlight the risks associated with opening up multiple work sites simultaneously without adequately considering the necessary resources (e.g. barriers, labor, machinery including design) to manage operations effectively and complete tasks within the designated timeframe. This reflects shortcomings in planning and resource allocation. An improved project management approach is needed to effectively manage ESHS risks going forward.
- CESMP is a contractual obligation and PEP is mandated to fully commit to the standards and procedures outlined in their CESMP. Failure to comply not only constitutes a breach of contract but also reflects poorly on the organization's credibility and commitment to environmental and social safeguards.
- CESMP for trunk mains need to be updated (last revised on 02/02/2023). A revised version must be submitted to SW PM for approval. Figure 7 in the CESMP must be updated with names of current staffs. The CESMP is a live document and should be reviewed/amended on an ongoing basis.
- Ensure the implementation responsibilities of the CESMP in Table 4 must be adhere to by responsible PEP personnel.
- All systems, processes and plans stated in the CESMP must be followed.
- All construction wastes at all 3 TM sites must be collected and disposed at Ranadi landfill site.



P.O. BOX 3407 | Honiara | p: 44700 | e: service@solomonwater.com.sb
Solomon Islands Water Authority Trading as Solomon Water

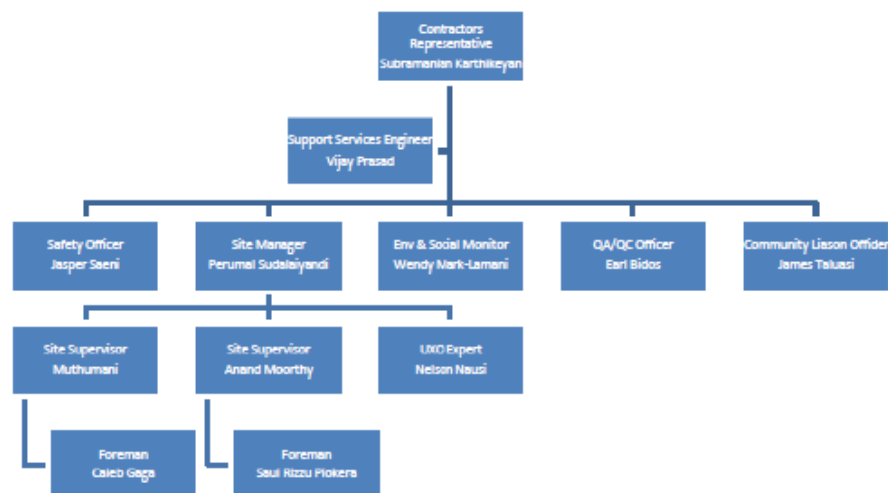
LMU/PMU
Environmental and Social Safeguards

Non-Conformance Report
No. 2/25 TM

3.6 PEP Structure and CESMP Implementation and Management

The structure of the PEP implementation team is shown in Figure 5 below and other responsible entities are listed in Table 4.

Figure 7 PEP Structure for CESMP Implementation





P.O. BOX 1407 | Honiara | p: 44700 | e: service@solomonwater.com.sb
Solomon Islands Water Authority Trading as Solomon Water

LMU/PMU

Environmental and Social Safeguards

Non-Conformance Report

No. 2/25 TM

Table 4: CESMP Implementation Responsibilities

RESPONSIBILITIES	CR	SSM	SM	ESM	SS	CLO	UXO
Responsibility to ensure compliance with environmental and social processes	X	X	★	X	X	X	X
Preparing, reviewing & maintaining the CESMP including – establishment and upkeep of objectives and targets / aspect and impact register / document control / records	X	X	X	★	X	X	X
Managing the Implementation of site environmental and social Control measures			X	X	★	X	X
Coordinate Communications with Interested parties, including complaints (i.e. a grievance redress mechanism)			X	X	★	★	X
Train employees & Communicate importance of environmental and social management i.e. Induction onto CESMP and associated procedures and policies			★	X	X	X	X
Communicate with subcontractors/expatriate and local staff on environmental and social expectations			X	X	X	★	X
Comply with applicable regulatory requirements	X	X	★	X	X	X	X
Maintain equipment/tools/spill kit to control environmental impact			X	X	★		
Coordinate emergency response efforts			X		★	X	X
Manage Environmental and Social Incidents & Reporting Requirements		X	X	X	★	X	X
Internal Inspections		X	X	X	X		X
Chance finds of UXO	X	X	X	X	X	X	★
Archeological chance finds	X	X	X	★ X	X	X	X

3.7 Other Entities

Table 5 Other Entities

Entity Name	Responsibility On-site
Client Rep on Site:	Clients Authority On-site- Adam Winter (Project Manager) ensure that project will be completed as per specification and requirements.
Project Engineer:	Enforce the project is being carried out as per the requirements, details, and description
Local Authority	Ensure that all local regulations are being followed, from building practices to the security of the environment and the public concerned.