



HOW TO TOP UP USING USER INTERFACE UNIT (UIU)

Purchase Top Up by producing your meter number at our Hyundai Mall Cashier Outlet or Customer Care Centre at BJS building, Commonwealth Street, Point Cruz.

**STEP
1**

HOW TO ENTER YOUR TOP UP TOKEN

Turn on UIU by pressing the arrow

**STEP
2**

Your Meter No. will run across the UIU screen. Wait until you see time appears on the screen

**STEP
3**

Enter your 20 digit water credit token on your receipt followed by #

**STEP
4**

Your meter No. will be shown on the UIU screen followed by how many litre paid for

**STEP
5**

Supply of water activated



OUR VISION

Safe water for a healthy nation

OUR MISSION

To provide safe and reliable water service in our areas of operations in Solomon Islands

WE'RE WITH YOU

IMPROVING VALUE
IMPROVING SERVICES

IMPROVING OUR FUTURE

FOR FURTHER INFORMATION PLEASE CONTACT US:

- ☎ 23985 | 8961986
- @ service@solomonwater.com.sb
- f @SolomonWater
- 🌐 SolomonWater.com.sb



CASHWATER

USER INSTRUCTIONS



WE'RE WITH YOU

TO OUR VALUED CUSTOMER

We wish to inform you that Solomon Water is installing CashWater meters on all domestic customers in your area. This project started in 2017 and will continue in the new year. You now have a CashWater meter with a token of 5000 litres for your initial use. We will recover the cost of this initial water supply through your Top Ups. This water will last you 2-3 days so we recommend you top up at our BJS, Customer Care Centre, Commonwealth Street, Point Cruz or Hyundai Mall at your earliest to avoid any inconvenience.

Business Opening Hours		
Opening Days	Cashier Location	Time
Monday - Friday	BJS Customer Care Centre & Hyundai Mall	8:30am - 4:00pm
Saturday	BJS Customer Care Centre & Hyundai Mall	8:30am - 2:00pm

CASHWATER

- **Prepaid Supply**
- **Similar to Cash Power**
- **Has a life span of 15 Years**
- **Simple and easy to use**
- **Provides daily reading of how much water you are using**
- **Helps you manage your costs**
- **Simply Top Up to use**

WE'RE WITH YOU IN WANTING TO PROVIDE IMPROVED AND RELIABLE WATER SERVICES

CASHWATER COMPONENT



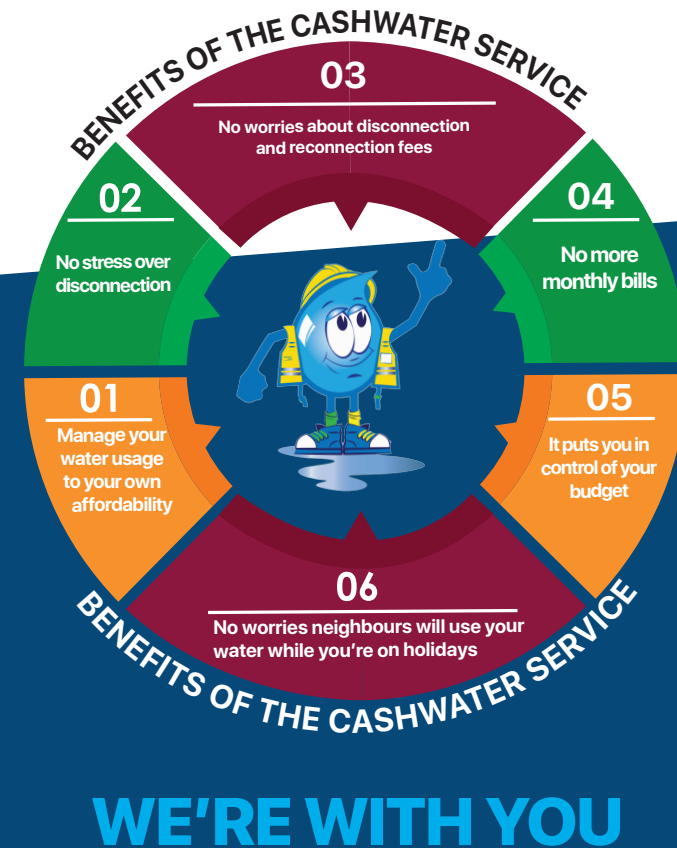
Inseparable (The WMD and WATER METER are inseparable and must not be tampered with)

DOMESTIC CUSTOMERS ARE CHARGED

Monthly Usage	Water Tariff
0kl to 15kl	\$6.49
> 15kl to 30kl	\$9.78
> 30kl	\$11.42

**Rates effective from 1 January 2020 - 31 December 2020*

**Monthly standing charges remain unchanged from 2019. CashWater connection standing charge is \$1.69 per kilolitre and is added to above tariff rates.*



WE'RE WITH YOU